



Efficacy of Various Chemical Sprays on Plant Growth of Chickpea (*Cicer arietinum* L.) in Terminal Heat Stress Conditions

Gaurav Yadav ^{a++*}, C. L. Maurya ^{a#}, Harshit Gupta ^{a++},
Shreya Singh ^{a++}, Abhishek Pati Tiwari ^{a++}
and Sachin Kumar Yadav ^{b++}

^a Department of Seed Science and Technology, CSAUA&T, Kanpur, UP-208002, India.

^b Department of Entomology, CSAUA&T, Kanpur, UP-208002, India.

Authors' contributions

This work was carried out in collaboration among all authors. All authors read and approved the final manuscript.

Article Information

DOI: 10.9734/IJECC/2024/v14i34045

Open Peer Review History:

This journal follows the Advanced Open Peer Review policy. Identity of the Reviewers, Editor(s) and additional Reviewers, peer review comments, different versions of the manuscript, comments of the editors, etc are available here: <https://www.sdiarticle5.com/review-history/107339>

Original Research Article

Received: 01/08/2023

Accepted: 04/10/2023

Published: 11/03/2024

ABSTRACT

Heat stress is now widely accepted as an important ecological factor influencing growth of plants and production. Rising temperatures as a result of global warming cause heat stress, reducing plant development and potential output throughout the entire globe. A field experiment was carried out at Chandra Shekhar Azad University of Agriculture & Technology, Kanpur, to minimize the heat stress induced-losses in chickpea plants with the foliar spray of chemicals during two consecutive years 2021-22 and 2022-23 at Rabi season (November-April). Experimental treatments comprise

⁺⁺Research Scholar;

[#]Professor HoD;

^{*}Corresponding author: E-mail: gauravcsasst@gmail.com;

two chickpea varieties (RVG-202 and RVG-203) sown on same day (15th November). foliar spray of seven chemicals at vegetative, anthesis and at both stages. The chemicals include Salicylic acid @ 800 ppm, Salicylic acid @ 400 ppm, Ascorbic acid @ 10 ppm, Potassium chloride @ 1%, Thiourea @ 400 ppm, Cycocel @ 400 ppm and Control (no spray). Results suggested that heat stress severely reduced the chickpea growth and productivity. However, foliar application of salicylic acid and thiourea positively affected the plant growth attributes which ultimately increased the final productivity. Concisely, the foliar spray of chemicals particularly, salicylic acid and thiourea modulated the heat stress induced losses in chickpea cultivars, RVG-202 and RVG-203 by improving their antioxidant defense mechanism and enhanced the productivity.

Keywords: Chickpea; plant growth; salicylic acid; thiourea; terminal heat stresses.

1. INTRODUCTION

“Chickpea (*Cicer arietinum* L.) is an annual pulse of the legume family, herbaceous, pod-producing plant, in areas with a semiarid or temperate climate” [1,2]. “It is highly valued for its nutritional quality and health benefits and ability to improve soil fertility and sustainability of the cropping systems. Chickpea is an excellent source of protein, carbohydrate, dietary fibres, polyunsaturated fatty acids, minerals and vitamins” (Jukanti, Gaur et al., 2012). “It is also considered as a high energy and protein feed in animal diets” (Bampidis & Christodoulou, 2011).

“Historically, Asia is a major producer of chickpeas, followed by Australia, Africa, America, and Europe. Globally, chickpea is grown in 150.04 lakh hectares area with a production of 158.71 lakh tonnes and productivity of 1057.8 kg/ha. India is the largest producer and consumer of pulses in the world. It has 36.8% of global area, 24.2% of global production and 27% of consumption” [3]. During 2021-22, India contributed 86% of total global chickpea production, with 137.50 lakh tonnes grown on 102.65 lakh hectares with a productivity of 1447 kg/hectare [4]. In India, Uttar Pradesh holds the fourth position with share of 5.7% in chickpea production. Uttar Pradesh produces 7.83 lakh tonnes in area of 5.94 lakh hectares with 1243 kg/hectare productivity in 2021-22.

“Chickpea (*Cicer arietinum* L.) is a cool and dry season food legume largely grown on residual soil moisture after the rainy season. The chickpea crop is largely grown under rainfed conditions without irrigations. Thus, soil moisture deficit towards end of the crop season (terminal drought) is the most important abiotic stress in about two-thirds of the global chickpea area” (Gaur et al. 2012). “The optimal temperatures for chickpea growth and reproductive phase range between 10°C and 30°C. High temperature

during the reproductive stage causes a greater problem than at the seedling or vegetative phase. A few days of exposure to high temperatures ($\geq 32^{\circ}\text{C}$) during reproductive phase can cause heavy yield losses. Chickpea suffers heavy yield losses when exposed to heat stress at reproductive (flowering and podding) stage” (Gaur et al., 2012); [5,6].

“Moisture stress at flowering and seed setting is most common and reported to reduce the seed yield significantly. Consequently, terminal drought stress, which occurs during the reproductive phase of the crop is common and critical” [7]. “The frequency and severity of drought and heat stresses are further expected to increase due to increasing climatic variability and overall impacts of climate change. Varieties with enhanced tolerance to drought and heat stresses are needed for increasing and stabilizing chickpea production in the country. Salicylic acid is involved in water relations of plant cells in abiotic stress conditions and it is well known that SA diminishes the impairments arisen from water deficiency in plants” [8]. “Salicylic acid (SA) plays a key role in regulation of plant growth, development, interactions with other organisms and responses to environmental stress” [9]. “Ascorbic acid is found in the cytosol, chloroplasts, vacuoles and mitochondria of plant cells. It has a great effect on physiological processes such as cell division, plant growth and the biosynthesis of cell wall, metabolites and phytohormones. Moreover ascorbic acid plays a vital role in renovation of chloroplast and mitochondrion membranes” [10-12].

“Foliar spray (exogenous) application of thiourea has been found effective in stress alleviation and are crucial for enhancing crop growth. Thiols are well known to maintain the redox state (-SH/-S-S-ratio) of the cell and its proper functioning under stress” [13,14]. Improvement in plant growth and development under different stresses

due to foliar spray of thiourea has been observed in maize [15], wheat [16], pearl millet [17] and cluster bean [18].

2. MATERIALS AND METHODS

The experiments were carried out at Student's Instructional Farm and in the seed testing laboratory of Department of Seed Science and Technology, Chandra Shekhar Azad University of Agriculture & Technology Kanpur, during Rabi 2021-22 (1st year) and 2022-23(IInd year). The experiment conducted with split plot design to "Studies on influence of terminal heat stress on seed yield and seed quality in chickpea (*Cicer arietinum* L.)" consisted of two chickpea varieties namely RVG-202 (V₁) and RVG-203 (V₂). The experiment consisted of twenty two treatment combinations as mentioned below.

Main Plots- Varieties (V₁- RVG 202 and V₂ - RVG-203).

Sub Plots- Chemicals spray treatments: T₀- Control (no spray), T₁- Salicylic acid @ 800 ppm at Vegetative, T₂- Salicylic acid @ 400 ppm at Vegetative, T₃- Ascorbic acid @ 10 ppm at Vegetative, T₄-KCl @ 1% at Vegetative, T₅- Thiourea @ 400 ppm at Vegetative, T₆-KNO₃ @ 0.3% at Vegetative, T₇-Cycocel @ 400 ppm at Vegetative, T₈- Salicylic acid @ 800 ppm at Anthesis, T₉- Salicylic acid @ 400 ppm on Anthesis, T₁₀- Ascorbic acid @ 10 ppm on Anthesis, T₁₁-KCl @ 1% at Anthesis, T₁₂- Thiourea @ 400ppm on Anthesis, T₁₃-KNO₃ @ 0.3% at Anthesis, T₁₄-Cycocel @ 400 ppm at

Anthesis, T₁₅- Salicylic acid @ 800 ppm at Vegetative + Anthesis, T₁₆- Salicylic acid @ 400 ppm on Vegetative + Anthesis, T₁₇- Ascorbic acid @ 10 ppm at Vegetative + Anthesis, T₁₈- KCl @ 1% at Vegetative + Anthesis, T₁₉-Thiourea @ 400 ppm at Vegetative + Anthesis, T₂₀- KNO₃ @ 0.3% on Vegetative + Anthesis and T₂₁-Cycocel @ 400 ppm at Vegetative + Anthesis.

The seeds were sown in three replications at spacing of 30 x 10 cm. Foliar sprays at vegetative and reproductive stages were given as per the treatments of subplot. Chemical spraying was done in morning or evening when wind speed were calm, at the rate of 200 ltr./ha or ac...please check (200 ml. per plot in 10 m² area). For the preparation of solution 1mg/ltr chemical were used for 1PPM solution. The observations were recorded on ten randomly selected plants from each plot on plant height and number of branches plant⁻¹ at physiological maturity stage. The data analysis was carried out using statistical techniques following Cochran and Cox (1957).

3. RESULTS AND DISCUSSION

The terminal heat stress and foliar spray of chemicals had a significant influence on the plant growth characters (Plant height and number of branches plant⁻¹) and yield of chickpea. Plant height (cm) is an important determinant that decides the yield potential of any crop plant. The heat stress and foliar spray significantly influenced the plant height (cm) at physiological maturity stage in chickpea (Table 1).

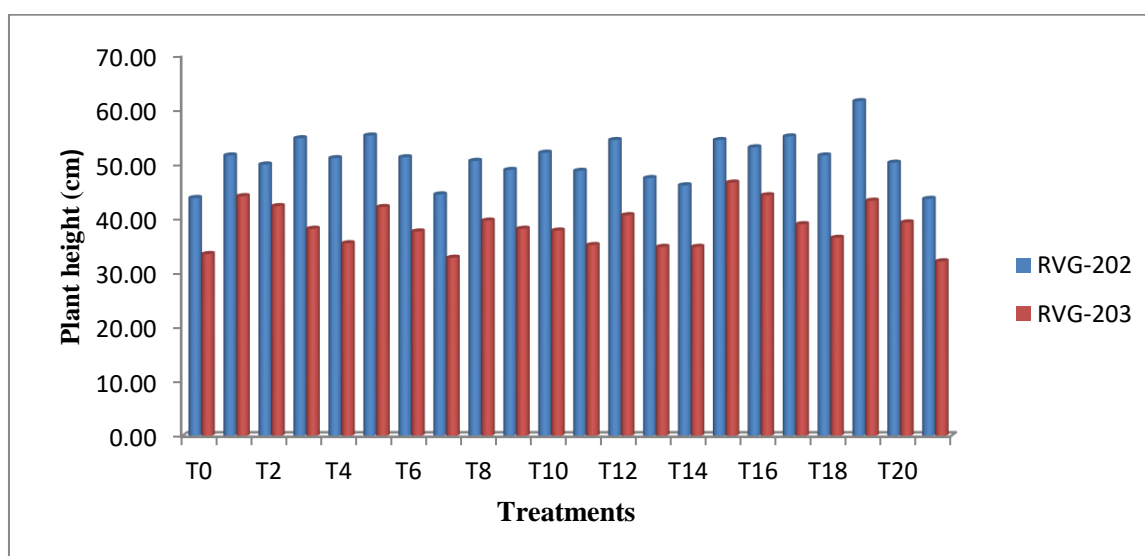


Fig. 1. Effect of varieties and chemicals sprays on plant height (cm) in chickpea

Table 1. Effect of varieties and chemicals sprays on plant height (cm) in chickpea

Treatments	I st year			II nd year			Pooled		
	V ₁	V ₂	Mean	V ₁	V ₂	Mean	V ₁	V ₂	Mean
T ₀	44.33	33.67	39.00	43.33	33.35	38.34	43.83	33.51	38.67
T ₁	52.00	44.00	48.00	51.33	44.33	47.83	51.67	44.17	47.92
T ₂	51.00	42.00	46.50	49.00	42.67	45.83	50.00	42.33	46.17
T ₃	54.67	38.33	46.50	55.00	38.00	46.50	54.83	38.17	46.50
T ₄	51.00	35.67	43.33	51.33	35.33	43.33	51.17	35.50	43.33
T ₅	55.67	42.33	49.00	55.00	42.00	48.50	55.33	42.17	48.75
T ₆	51.00	38.00	44.50	51.67	37.33	44.50	51.33	37.67	44.50
T ₇	44.00	32.67	38.33	45.00	33.00	39.00	44.50	32.83	38.67
T ₈	51.00	38.33	44.67	50.33	41.00	45.67	50.67	39.67	45.17
T ₉	49.67	36.67	43.17	48.33	39.67	44.00	49.00	38.17	43.58
T ₁₀	52.00	37.67	44.83	52.33	38.00	45.17	52.17	37.83	45.00
T ₁₁	49.00	35.00	42.00	48.67	35.33	42.00	48.83	35.17	42.00
T ₁₂	54.33	41.00	47.67	54.67	40.33	47.50	54.50	40.67	47.58
T ₁₃	47.33	34.67	41.00	47.67	35.00	41.33	47.50	34.83	41.17
T ₁₄	45.33	35.00	40.17	47.00	34.67	40.83	46.17	34.83	40.50
T ₁₅	54.67	47.00	50.83	54.33	46.33	50.33	54.50	46.67	50.58
T ₁₆	53.33	44.67	49.00	53.00	44.00	48.50	53.17	44.33	48.75
T ₁₇	55.67	39.33	47.50	54.67	38.67	46.67	55.17	39.00	47.08
T ₁₈	51.33	36.67	44.00	52.00	36.33	44.17	51.67	36.50	44.08
T ₁₉	62.00	43.67	52.83	61.33	43.00	52.17	61.67	43.33	52.50
T ₂₀	50.67	39.67	45.17	50.00	39.00	44.50	50.33	39.33	44.83
T ₂₁	43.33	32.00	37.67	44.00	32.34	38.17	43.67	32.17	37.92
Mean	51.06	38.55		50.91	38.62		50.98	38.58	
Factors	SE(d)	C.D.at 5%		SE(d)	C.D.at 5%		SE(d)	C.D.at 5%	
V	0.63	2.71		0.55	2.67		0.59	2.69	
T	1.09	2.16		0.98	1.96		1.03	2.05	
VxT	1.54	3.05		1.38	2.74		1.46	2.90	
CV (%)	4.19			3.77			3.98		

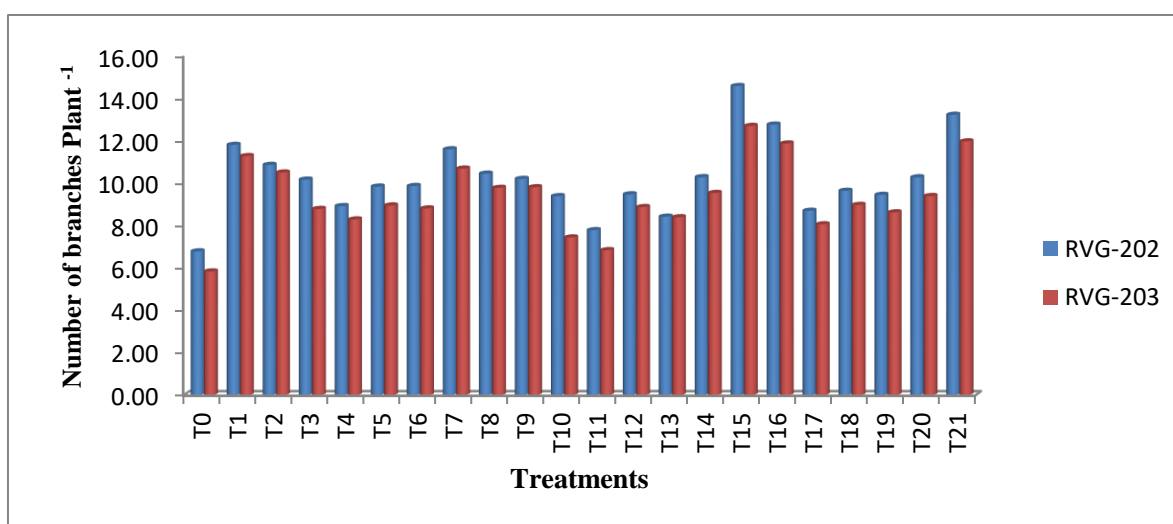


Fig. 2. Effect of varieties and chemicals sprays on number of branches plant⁻¹ in chickpea

From the perusal of data (Table 1), it is clear that significant differences were observed between the two varieties in terms of plant height at physiological maturity. The variety RVG-202 (V₁) attained more plant height (50.98 cm) as

compared to the variety RVG-203 (V₂) which exhibited 38.58 cm. plant height at physiological maturity. From the analysis, it is also perceptible that V₁ scored 32.14% more plant height as compared to V₂.

Table 2. Effect of varieties and chemicals sprays on branches plant⁻¹ in chickpea

Treatments	I st year			II nd year			Pooled		
	V ₁	V ₂	Mean	V ₁	V ₂	Mean	V ₁	V ₂	Mean
T ₀	6.89	5.83	6.36	6.67	5.83	6.25	6.78	5.83	6.31
T ₁	11.78	11.22	11.50	11.83	11.33	11.58	11.81	11.28	11.54
T ₂	10.89	10.50	10.70	10.83	10.50	10.67	10.86	10.50	10.68
T ₃	10.00	8.78	9.39	10.33	8.78	9.56	10.17	8.78	9.47
T ₄	8.83	8.07	8.45	9.00	8.50	8.75	8.92	8.29	8.60
T ₅	9.67	8.78	9.23	10.00	9.11	9.56	9.84	8.95	9.39
T ₆	9.40	8.44	8.92	10.33	9.17	9.75	9.87	8.81	9.34
T ₇	11.52	10.70	11.11	11.67	10.67	11.17	11.60	10.69	11.14
T ₈	10.89	10.11	10.50	10.00	9.44	9.72	10.45	9.78	10.11
T ₉	10.73	9.78	10.26	9.67	9.83	9.75	10.20	9.81	10.00
T ₁₀	9.44	7.50	8.47	9.33	7.37	8.35	9.39	7.44	8.41
T ₁₁	7.67	6.89	7.28	7.89	6.78	7.34	7.78	6.84	7.31
T ₁₂	8.72	8.50	8.61	10.22	9.24	9.73	9.47	8.87	9.17
T ₁₃	8.50	7.78	8.14	8.33	9.00	8.67	8.42	8.39	8.40
T ₁₄	10.56	9.57	10.07	10.00	9.50	9.75	10.28	9.54	9.91
T ₁₅	14.83	12.83	13.83	14.33	12.57	13.45	14.58	12.70	13.64
T ₁₆	12.85	11.74	12.30	12.67	12.00	12.34	12.76	11.87	12.32
T ₁₇	8.72	7.78	8.25	8.67	8.33	8.50	8.70	8.06	8.38
T ₁₈	9.94	9.11	9.53	9.33	8.83	9.08	9.64	8.97	9.30
T ₁₉	9.67	8.57	9.12	9.22	8.67	8.95	9.45	8.62	9.03
T ₂₀	10.44	9.28	9.86	10.11	9.50	9.81	10.28	9.40	9.83
T ₂₁	13.67	12.50	13.09	12.78	11.44	12.11	13.23	11.97	12.60
Mean	10.26	9.28		10.15	9.38		10.21	9.33	
Factors	SE(d)	C.D.at 5%		SE(d)	C.D.at 5%		SE(d)	C.D.at 5%	
V	0.30	0.68		0.15	0.71		0.23	0.70	
T	0.17	0.34		0.27	0.54		0.22	0.44	
VxT	0.24	0.87		0.39	0.91		0.31	0.89	
CV (%)	9.30			8.87			9.08		

The overall mean data presented in Table 1 reveal that plant height varied significantly in all the applied treatments. Among the different treatments, T₁₉ (Thiourea spray at vegetative + anthesis stage @ 400 ppm) resulted in maximum plant height (52.50 cm) followed by T₁₅ (Salicylic acid spray at vegetative + anthesis stage @ 800 ppm). The treatment, T₂₁ (Cycocel spray at vegetative + anthesis stage @ 400 ppm) exhibited the shortest plant height at 37.92 cm.

The interaction of variety × treatment (V×T) had significant effect on plant height. The least plant height (32.17 cm Fig. 1) was observed in the treatment combination of V₂×T₂₁ which did not statistically differ from the interaction of V₂×T₀, V₂×T₇, V₂×T₁₃ & V₂×T₁₄ (Table 1). The interaction V₁×T₁₉ exhibited the highest plant height (61.67 cm Fig. 1) which showed significant difference from rest of the treatment combinations (Table 1).

The data recorded on number of branches plant⁻¹ at physiological maturity given in Table 2 and

depicted graphically in Fig. 2, clearly indicates that both the varieties and treatments had significant effect on number of branches plant⁻¹ in chickpea. From the perusal of data (Table 2), it is clear that significant difference- was observed between the two varieties in terms of number of branches plant⁻¹ at physiological maturity. The variety RVG-202 (V₁) attained more number of branches plant⁻¹ (10.21) as compared to the variety RVG-203 (V₂) which exhibited 9.33 number of branches plant⁻¹ at physiological maturity. From the analysis it is also perceptible that V₁ scored 8.61 % more plant height as compared to V₂.

The overall mean data presented in Table 2 reveal that number of branches plant⁻¹ varied significantly in all the applied treatments. Among the different treatments, T₁₅ (Salicylic acid spray at vegetative + anthesis stage @ 800 ppm) registered maximum number of branches plant⁻¹ (13.64) followed by T₁₆ (Salicylic acid spray at vegetative + anthesis stage @ 400 ppm) while the minimum number of branches

plant⁻¹ (6.31) was recorded in T₀ (Control) (Fig. 2).

The interaction of variety × Treatment (V×T) had significant effect on number of branches plant⁻¹. The least number of branches plant⁻¹ (5.83, Fig. 2) was observed in the treatment combination of V₂×T₀ which showed significant difference from rest of the treatment combinations. The interaction of V₁×T₁₅ exhibited the highest number of branches plant⁻¹ (14.58 Fig. 2) which showed significant difference from rest of the treatment combination.

It was found that the application of thiourea and salicylic acid in the form of foliar spray regulates the plant growth as reported by He et al., [19]; Khan et al., [20]; Sahu et al., [15]; Sahu et al., [16]; Parihar et al., [17] and Garg et al., [18] Salicylic acid regulates the stomatal openings, ions and nitrogen uptake and regulates the enzymes activities which lead to an enhanced plant growth. Foliar sprays of thiourea under moisture stress during flowering and seed setting recorded significantly higher plant height [21-23].

4. CONCLUSION

It is concluded that the foliar spray of thiourea spray at vegetative + anthesis stage @ 400 ppm and Salicylic acid spray at vegetative + anthesis stage @ 800 ppm have significant influence on chickpea plant growth under heat stress conditions, in terms of plant height and number of branches plant⁻¹ The chemical treatments have been found remunerative as compared to other treatments and control.supportive data on physiological characters and cost benefit ratio shall be given for justification of this statement.

COMPETING INTERESTS

Authors have declared that no competing interests exist.

REFERENCES

- Knights EJ, Hobson KB. Chickpea: Overview. In (C. Wrigley, H. Corke, K. Seetharaman, & J. Faubion Eds.), Encyclopedia of food grains: Second edition. Elsevier Ltd. 2016;1-4:316-323.
- Wallace T, Murray R, Zelman K. The nutritional value and health benefits of chickpeas and hummus. *Nutrients*. 2016; 8(12):766.
- Anonymous. Acharya N.G. Ranga Agricultural University Crop Outlook Reports; 2022,2021.
- Available:https://agricoop.gov.in/
- Gaur PM, Thudi M, Nayak S, Samineni S, Krishnamurthy L, Gan-garao NVPR, Varshney RK. Progress in marker-assisted breeding for drought tolerance in chickpea. Plant and Animal Genome Conference, Abstract No. W339. 11-16 January, 2013. SanDiego, CA, USA; 2013.
- Gaur PM, Samineni S, Krishnamurthy L, Kumar S, Ghanem ME, Beebe S, Varshney RK. High temperature tolerance in grain legumes. *Legume Perspectives*. 2015;7:23–24.
- Anbessa Y, Bejiga G. Evaluation of ethiopian chickpea landraces for tolerance to drought. *Genetic Resources Crop Evolution*. 2002;49:557-564.
- Hussain M, Malik MA, Farooq M, Khan MB, Akram M, Saleem MF. Exogenous glycinebetaine and salicylic acid application improves water relations, allometry and quality of hybrid sunflower under water deficit conditions. *J. Agron. Crop Sci*. 2009;195:98-109.
- Miura K, Tada Y. Regulation of water, salinity and cold stress responses by salicylic acid. *Front Pl. Sci*. 2014;5:4-10.
- Barth C, Moeder W, Klessig DF, Conklin PL. The timing of senescence and response to pathogens is altered in the ascorbate-deficient Arabidopsis mutant vitamin C-1. *Plant Physiol*. 2004;134:1784-1792.
- Pavet V, Olmos E, Kiddle G, Mowla S, Kumar S, Antoniw J, Alvarez ME, Foyer CH. Ascorbic acid deficiency activates cell death and disease resistance response in Arabidopsis. *Plant Physiol*. 2005;139:1291-1303.
- Barth C, De Tullio M, Conklin PL. The role of ascorbic acid in the control of flowering time and the onset of senescence. *J. Exp. Bot*. 2006;57:1657-1665.
- Anjum F, Wahid A, Farooq M, Javed F. Potential of foliar applied thiourea in improving salt and high temperature tolerance of bread wheat (*Triticum aestivum*). *Int. J. Agric. Biol*. 2011;13:251–256.
- Perveen A, Wahid A, Hussain I, Rasheed R, Mahmood S. Growth bioregulatory role of root-applied thiourea: Changes in growth, toxicity symptoms and photosynthetic pigments of maize.

- Pakistan J. Agric. Sci. 2013;50:455-462.
15. Sahu MP, Solanki NS, Dashora LN. Effect of thiourea, thiamin and ascorbic acid on growth and yield of maize (*Zea mays* L.). J. Agron. Crop Sci. 1993;171:65-69.
 16. Sahu MP, Kumawat SM, Ramaswamy NK, D'souza SF. Sulphydril bioregulator technology for increasing wheat productivity. Res. Bulletin. 2006;1:1-56.
 17. Parihar GN, Sahu MP, Joshi NL. Nitrogen, sulphur and thiourea nutrition of pearl millet [*Pennisetum glaucum* (L) R. Br.] - II. Effect on yield and yield components. Ann. Arid Zone. 1998;37:59-67.
 18. Garg BK, Barman U, Kathju S. Influence of thiourea on photosynthesis, nitrogen metabolism and yield of clusterbean (*Cyamopsis teragonoloba* L.) under rainfed condition of Indian arid zone. Plant Growth Regulation. 2006;48:237-245.
 19. He Y, Liu Y, Cao W, Huai M, Xu B, Huang B. Effects of salicylic acid on heat tolerance associated with antioxidant metabolism in Kentucky Bluegrass. Crop Sciences. 2005;45(3):988-995.
 20. Khan MIR, Asgher M, Khan NA. Alleviation of salt-induced photosynthesis and growth inhibition by salicylic acid involves glycinebetaine and ethylene in mungbean (*Vigna radiata* L.). Plant Physiology and Biochemistry. 2014;80:67-74.
 21. Doddagoudar SR, Shakuntala NM, Meena MK. Mitigation of moisture stress through foliar spray of thiourea, salicylic acid and homobrassinolide in chickpea (*Cicer arietinum* L.). Legume Research-An International Journal. 2021;44(9):1032-1037.
 22. Jat BL, Gupta JK, Meena RL, Sharma RN, Bhati DS. Effect of foliar application of zinc sulphate and thiourea on productivity and economics of chickpea (*Cicer aritenum*). Journal of Progressive Agriculture. 2014; 5(2):62-65.
 23. Ahmed N, Rahman K, Rahman M, Sathi KS, Alam MM, Nahar K, Hasanuzzaman M. Insight into the thiourea-induced drought tolerance in two chickpea varieties: Regulation of osmoprotection, reactive oxygen species metabolism and glyoxalase system. Plant Physiology and Biochemistry. 2021;167:449-458.

© Copyright (2024): Author(s). The licensee is the journal publisher. This is an Open Access article distributed under the terms of the Creative Commons Attribution License (<http://creativecommons.org/licenses/by/4.0>), which permits unrestricted use, distribution, and reproduction in any medium, provided the original work is properly cited..

Peer-review history:

The peer review history for this paper can be accessed here:
<https://www.sdiarticle5.com/review-history/107339>