



Annual Research & Review in Biology

37(7): 25-43, 2022; Article no.ARRB.88725
ISSN: 2347-565X, NLM ID: 101632869

Influence of Environmental Variables on Fish Distribution in the Flooded Swamp Forest of the Lake Tumba Micro-basin on the Mbandaka-Research Center in Ecology and Forestry of Mabali (CREF Mabali) Road Axis in Bikoro, Equateur Province (DR Congo)

Adrien Boika Mondzoi Ndinga ^{a,b*}, Willy Lusasi Swana ^c,
Camille Nsimanda Ipey ^b, Victor Pwema Kiamfu ^c
and Dieudonné Musibono Eyu'anki ^b

^a Exact Sciences Section, Biology-Chemistry Department, Superior Pedagogical Institute of Mbandaka, PO Box 116 Mbandaka, DR Congo.

^b Department of Environmental Sciences, Faculty of Sciences, University of Kinshasa, PO Box 190 Kinshasa XI, DR Congo.

^c Laboratory of Limnology, Hydrobiology and Aquaculture, Department of Biology, Faculty of Sciences, University of Kinshasa, PO Box 190 Kinshasa XI, DR Congo.

Authors' contributions

This work was carried out in collaboration among all authors. Author ABMN Original idea, data sampling and writing of the manuscript. Author WLS Data sampling, drafting, revision of the manuscript and statistical analysis of the data author CNI Guidance and revision of the manuscript. Author VPK Research design, orientations and writing and editing of the manuscript. Author DME Research design and orientations. All authors read and approved the final manuscript.

Article Information

DOI: 10.9734/ARRB/2022/v37i730520

Open Peer Review History:

This journal follows the Advanced Open Peer Review policy. Identity of the Reviewers, Editor(s) and additional Reviewers, peer review comments, different versions of the manuscript, comments of the editors, etc are available here: <https://www.sdiarticle5.com/review-history/88725>

Original Research Article

Received 01 May 2022
Accepted 02 July 2022
Published 02 July 2022

ABSTRACT

Background and Objective: The majority of aquatic ecosystems in the Democratic Republic of Congo are highly anthropized, which could negatively influence biodiversity. The overall objective of

*Corresponding author
E-mail: willy.lusasi@unikin.ac.cd;

this study is to evaluate the influence of environmental variables on fish distribution in the flooded swamp forest of the Lake Tumba micro-basin on the Mbandaka- Research Center in Ecology and Forestry of Mabali road.

Study Area: This study took place in ponds, swamps, marigots and small streams in relation to Lake Tumba in the flooded forest zone of the Mbandaka-Mabali road axis in the territory of Bikoro, Equateur Province in the Democratic Republic of Congo.

Methods: Fish were collected using different fishing techniques and gears. Physico-chemical parameters were sampled using a multi-parameter Combo pH probe of the brand Hanna pH/ORP/EC/DO N° HI 9828, dissolved oxygen was measured using the Brand Voltcraft DO-100 oximeter and depth was determined using a graduated board. Several ecological indices of fish communities were determined as well as Hierarchical Ascending and Principal Component Classification analyses.

Results: Twenty-two fish species belonging to ten orders, thirteen families and fifteen genera were identified. The average values of the abiotic variables show that the waters of the study area are characterized by low values of physico-chemical parameters within the ranges compatible with the survival of the local fish fauna. The canonical correspondence analyses reveal that five environmental variables (temperature, depth, dissolved oxygen, sandy bottom and sandy-muddy or gravelly bottom) would explain the abundance and distribution of fourteen fish species in the Longonye site. In contrast, turbidity, conductivity, pH, muddy bottom, and bottom littered with plant debris influenced the abundance and distribution of eight fish species at the Hongo, Ilungu, Lotende and Membe sites. Scoop fishing, stump removal, and the use of ichthyotoxic plants were the main anthropogenic activities that could compromise the fish fauna in the study area.

Conclusion and Outlook: Promoting sustainable local fishing methods would help preserve the fish fauna studied and limit the deterioration of fish habitats.

Keywords: Abiotic variables; distribution; diversity; ichthyological fauna; flooded swamp forest; bikoro.

1. INTRODUCTION

Among the organisms living in aquatic ecosystems, fish are the best known because of their size, abundance and biodiversity. A source of natural animal protein important in the diet, this fishery resource is very rich in mineral elements as well as vitamins A and D, approximately the same as meat in terms of protein content (17 to 20%) and nutritional value [1]. It is the main source of animal protein most accessible to populations in some countries in Africa [2] and mainly in the Democratic Republic of Congo [3,4].

In addition, fish play a considerable role in the ecological process of aquatic ecosystems, acting at different tropical levels as herbivores, detritivores, predators and prey [5]. In addition, the life history of several species is characterized by migrations between environments with different abiotic parameters [6].

Contemporary anthropological studies of primitive societies have confirmed the importance of fishing as a means of subsistence [7,8]. According to Yao et al, [8], human settlements are often established in areas with

relatively good fish catch. Abuses caused by various human activities on the waterways of large settlements. The majority of the aquatic ecosystems of the Democratic Republic of Congo are highly anthropized where agricultural exploitation [9,10], mining activities [11,12,13], garbage dumps [14,15], etc., invade the aquatic environment; this could negatively influence biodiversity [16,17].

The fisheries resources of the Congo Basin show a tendency to be overexploited due to the large number of artisanal fishermen, illegal fishing practices with small mesh nets, the absence of biological rest [18]. According to Boika et al. [19], given the disturbances and threats that these ecosystems are currently undergoing, a good taxonomic knowledge of the species, their living environment, their biology and the relationships that link them to the environment can encourage effective measures for their conservation and rational use.

In the Congo Basin, studies related to the biology, ecology, systematics as well as the influence of abiotic variables on fish are fragmentary [19]. Few studies have been carried out on fish in the flooded swamp forest of Lake Tumba, except for the one carried out by Boika

et al. [19], and those that exist deal with the systematics of fish in Lake Tumba and the Ikela region [20].

The objective of this study is to evaluate the influence of environmental variables on the distribution of fish in the micro-basin of the flooded swamp forest of Lake Tumba on the road axis Mbandaka-Centre de Recherche en Ecologie et Foresterie (CREF Mabali) in Bikoro in the Equateur Province of the Democratic Republic of Congo.

2. STUDY ENVIRONMENT, MATERIALS AND METHODS

2.1 Study Environment

This study took place in the flooded forest zone of the Mbandaka-Mabali road axis in the Equateur province of the Democratic Republic of Congo, where there are ponds, swamps, marigots and small streams, in connection with Lake Tumba (Fig. 1).

Five sampling sites (Table 1) were selected for the following reasons:

- Very few studies have focused on the ichthyological fauna of the flooded swamp forest around Lake Tumba ;

- Located on the road section, the different sites are accessible in all seasons by land and contribute strongly to the economy of the local populations who exploit different natural resources (fauna and flora) of the study area;
- There is intense fishing activity throughout the year, especially during periods of low water, which can be easily observed along the road.

The Lake Tumba region is bathed in a humid tropical climate of the equatorial type, characterized by almost constant temperatures, low temperature variations and abundant and regular rainfall [20]. There is a period of low rainfall from mid-June to mid-September characterized by a drop in temperature, open skies, rare and very low rainfall, resulting in a decrease in plant growth activity, limited leaf fall and a drop in water levels; This is a period conducive to fishing; a period of heavy rainfall from mid-September to mid-December, characterized by the resumption of plant life; this is the hottest season; a period of recession, with less rainfall, from mid-December to the end of February and a second rainy season from March to mid-June.

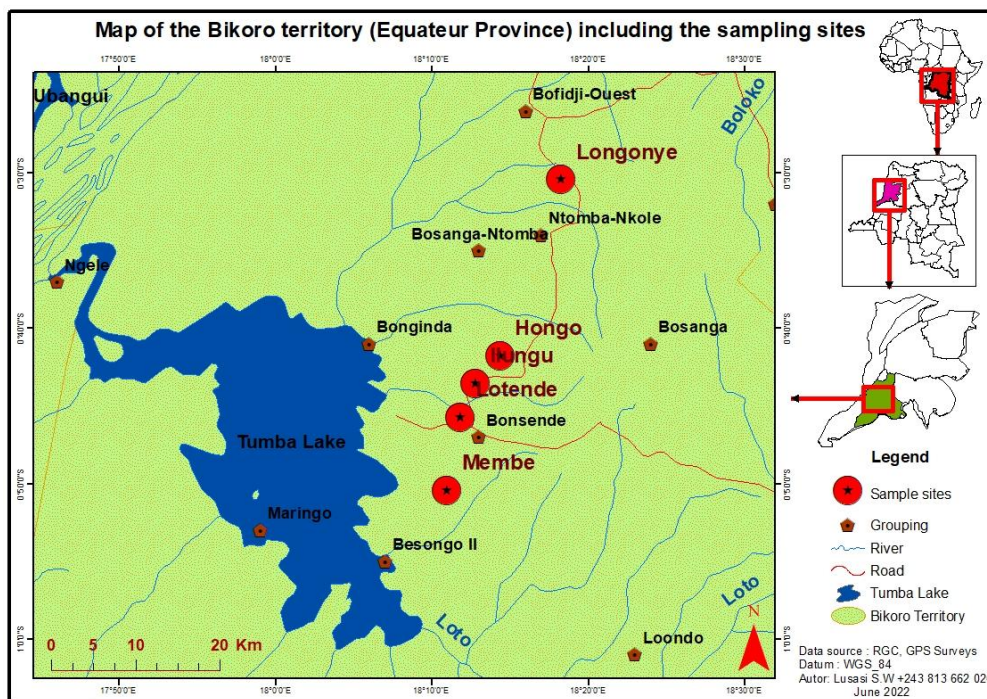


Fig. 1. Map of the Lake Tumba region showing the floodplain forest area of the Mbandaka-Mabali road in Equateur Province

Table 1. Geographical coordinates of the sites surveyed on the Mbandaka-Mabali axis

Sites	Geographic coordinates	Location along the road
Site I (Longonye)	00°30' 23.8" S 18° 18' 14" E	Between Elanga and Nsimba villages
Site II (Hongo)	00° 41' 43.6" S 18° 14' 21.2" E	Between villages Iyembe Monene and Iyembe Moke
Site III (Ilungu)	00° 43' 30.7" S 18° 12' 45.3" E	Between Iyembe Monene and Mpenda villages
Site IV (Lotende)	00° 45' 41.5" S 18° 11' 49.5" E	After the crossroads Mabali - Bikoro
Site V (Membe)	00° 50' 24.5" S 18° 10' 15.9" E	Mpaha-Bolia

2.2 Biological Material

The biological material consists of different species of fish and ichthyotoxic plants collected in the flooded swamp forest of the Lake Tumba micro-basin on the Mbandaka-CREF Mabali road axis in the Democratic Republic of Congo.

2.3 Methods

2.3.1 Collection of fish samples

Fish were collected using different techniques and gears. These include traditional creel fishing, line fishing, longline fishing, spear fishing, scooping (emptying of ponds) and fishing with ichthyotoxic plants. In the case of the latter technique, extracts of bark, leaves, roots and/or fruits of the different plant species were used. Supplemental fishing through fish purchases was conducted to maximize sample size. Sample collection was conducted from March to October 2018. In total, eight fishing campaigns with the different harvesting techniques were carried out.

2.3.2 Conservation of specimens

The different fish specimens collected were sorted and then fixed in a 10% formalin solution and kept in plastic jars. On each batch of specimens, the date and the site of harvest were indicated. The samples thus conditioned were sent to the laboratory for the appropriate manipulations. The samples thus conditioned were sent to the laboratory for the collection of morphometric parameters and meristic counting.

2.3.3 Systematic identification of fish

In the laboratory, the different fish specimens were first of all removed from their formalin through several successive baths in tap water,

then kept in jars containing 95% ethanol. Fish were identified to species level using systematic fish identification keys proposed by Poll and Gosse [21]; Lévêque et al. [22]; Mbega and Teugels [23]; Stiassny et al. [24] at the Laboratory of Limnology, Hydrobiology and Aquaculture of the Department of Biology of the Faculty of Sciences of the University of Kinshasa.

2.3.4 Collection and systematic identification of ichthyotoxic plants

The different ichthyotoxic plant species used by fishermen in the area to catch fish were collected in the flooded swamp forest of the Lake Tumba micro-basin on the Mbandaka-CREF Mabali road axis. After harvesting, plant samples were preserved in herbarium form for later identification. The species were identified according to the APG III botanical classification system [25] at the Plant Systematics Laboratory of the Centre for Research in Ecology and Forestry of CREF/Mabali.

2.3.5 Measurement of abiotic parameters

Abiotic parameters were assessed between the months of March and October 2018. Each parameter was assessed eight times during the sampling campaigns conducted for this study.

Physico-chemical parameters : Six physicochemical parameters were measured at each study site. These were temperature (°C), conductivity (µS/cm), turbidity (NTU: Nephelometric Turbidity Unit), water column depth (cm), dissolved oxygen (mg/L) and hydrogen potential. Water temperature, conductivity, pH and turbidity were sampled using a Hanna pH/ORP/EC/DO Combo multi-parameter probe No. HI 9828 and water column depth was measured using a centimeter scale

(for sites with a depth of less than one meter) and an echo sounder (for sites with a depth of more than at least one meter). Dissolved oxygen was measured using the Brand Voltcraft DO-100 oximeter.

2.4 Substrate Type

Background substrate at the study sites was determined as a percentage of the total area covered by each substrate type in relation to the total area of the remaining substrate types.

The substrate was collected from each station and then taken to the Laboratory of Pedology of the Faculty of Agronomic Sciences of the University of Kinshasa for oven drying (Memmert brand) at 30°C for 48 hours. After drying, the samples were sieved using sieves of different mesh sizes according to the classical methods of sediment evaluation.

Identification of human activities: Anthropogenic activities were identified from direct field observations in the study area. The extent and intensity of the various anthropogenic activities were determined. The purpose of this step was to identify human activities in the study area without linking these activities to fish distribution.

Statistical analysis and data processing: The data from the different analyses and observations were encoded on the Excel 2013 spreadsheet. The results obtained after the treatments were expressed in the form of tables, graphs and figures to make them interpretable. The Origin 6.1 software was used to draw the relative abundance diagrams of the orders, families and genera of the identified fishes. Mapping of the fishing stations was generated using ArcGIS 10.8 software using geographic coordinates (latitude and longitude) collected in the field with a Garmin Etrex GPS.

In order to understand the influence of environmental variables on the distribution of fish species in the swampy forest located on the Mbandaka Cref Mabali road axis, multivariate analyses were carried out on the basis of data relating to the ichthyological fauna and abiotic variables in relation to the different sampling sites. Hierarchical Ascending Classification (HAC) and Principal Component Analysis (PCA) were performed with the PaSt software (Paleontological Statistics, Version 2.16).

The Ascending Hierarchical Classification analysis consisted of grouping ecological entities or sampling units with similar characteristics based on the list of fish species caught as well as abiotic parameters in order to estimate the closeness of the fish catching sites. It is based on the measurement of similarity distances between ecological entities [26], the different sampling sites in this case.

Principal Component Analysis (PCA), a descriptive and exploratory method, was used in order to extract, in the most synthetic way possible, information on the influence of abiotic variables on biotic parameters (fish fauna) of the study area. This analysis allows an arrangement of the ecological entities along two or more dimensional axes based on the data on the specific composition [27].

3. RESULTS

3.1 List of Fish Inventoried in the Flooded Forest Located on the Mbandaka-Mabali Road Axis

Table 2 lists the orders, families, genera and species of fish identified in the flooded forest along the Mbandaka-CREF Mabali road.

The results of Table 2 above show that 22 species of fish grouped in ten (10) orders, 13 families and 15 genera have been recorded in the flooded forest of the Mbandaka-Cref Mabali road axis.

Relative abundance of the identified orders of fish: The orders *Perciformes*, *Osteoglossiformes* and *Siluriformes* are each represented by two families, or 15.4%. They are followed by *Cypriniformes*, *Polypteriformes*, *Mormyriiformes*, *Gonorhynchiformes*, *Channiformes*, *Cyprinodontiformes*, *Lepidosireniformes* with one family each (Fig. 2).

Relative abundance of families of identified fishes: Of all the fish identified, those of the family *Anabantidae* are the most representative with five species or 22.7% followed by the *Clariidae* with four species or 18.2%. They are followed by the families *Mormyridae* and *Cichlidae* which are represented by two species each or 9.09%. The other families are represented by only one species each (4.55%) (Fig. 3).

Table 2. Fish species identified in the flooded forest of the Mbandaka-CREF Mabali road axis

N°	Taxa recorded	Vernacular name (Lotomba)
I	Order of <i>Lepidosireniformes</i> 1° Family of <i>Protopteridae</i> a) <i>Protopterus dolloi</i> Boulenger, 1900	Nsembe
II	Order of <i>Cyprinodontiformes</i> 2° Family of <i>Aplocheilidae</i> b) <i>Aphyosemion elegans</i> Boulenger, 1899	Moningo
III	Order of <i>Cypriniformes</i> 3° Family of <i>Hepsetidae</i> c) <i>Hepsetus odoe</i> Bloch, 1794	Mwenge
IV	Order of <i>Gonorhynchiformes</i> 4° Family of <i>Phractolaemidae</i> d) <i>Phractolaemus ansorgii</i> Boulenger, 1901	Mobili
V	Order of <i>Mormyriiformes</i> 5° Family of <i>Mormyridae</i> e) <i>Petrocephalus micropthalmus</i> Pellegrin, 1908 f) <i>Petrocephalus pellegrini</i> Poll, 1941	Mbeyi, Ntoku Mbeyi, Ntoku
VI	Order of <i>Osteoglossiformes</i> 6° Family of <i>Notopteridae</i> g) <i>Xenomystus nigri</i> Günther, 1868 7° Family of <i>Pantodontidae</i> h) <i>Pantodon buchholzi</i> Peters, 1877	Ilembe Ihanzoli
VII	Order of <i>Perciformes</i> 8° Family of <i>Anabantidae</i> i) <i>Ctenopoma ansorgii</i> Boulenger, 1912 j) <i>Ctenopoma kingsleyae</i> Günther, 1896 k) <i>Ctenopoma lineatum</i> Nichols, 1923 l) <i>Ctenopoma nanum</i> Günther, 1923 m) <i>Ctenopoma pellegrini</i> Boulenger, 1902 9° Family of <i>Cichlidae</i> n) <i>Hemichromis fasciatus</i> Peters, 1852 o) <i>Hemichromis elongatus</i> Guichenot, 1861	Lokaka Molombe Lokaka Lokaka Mwende Ebindi, Mokeke Ebindi, Mokeke
VIII	Order of <i>Channiformes</i> 10° Family of <i>Channidae</i> p) <i>Parachanna obscura</i> Günther, 1861	Nsinga, Mongusu
IX	Order of <i>Polypteriformes</i> 11° Family of <i>Polypteridae</i> q) <i>Polypterus ansorgii</i> Boulenger, 1910	Monkonga
X	Order of <i>Siluriformes</i> 12° Family of <i>Clariidae</i> r) <i>Chanallabes apus</i> Gunther, 1873 s) <i>Clariallabes brevibarbis</i> Pellegrin, 1913 t) <i>Clarias anguillaris</i> Linné, 1758 u) <i>Clarias sp</i> 13° Family of <i>Malapteruridae</i> v) <i>Malapterurus electricus</i> Gmelin, 1789	Mohombi Lokamba Ngolo Ngolo Nina, Ntula

Relative abundance of identified fish genera :
Of all the genera of fish identified, the genera *Ctenopoma* with 5 species or 22.7 %, *Clarias*, *Petrocephalus* and *Hemichromis* with 2 species or 9.09 % respectively are the most represented. *Protopterus*, *Aphyosemion*, *Hepsetus*, *Phractolaemus*, *Xenomystus*, *Pantodon*, *Clariallabes*, *Chanallabes*, *Malapterurus*,

Parachanna and *Polypterus* are represented by only one species or 4.55 % (Fig. 4).

Numerical frequency of inventoried species:
The results visualized in Fig. 5 below inform that the numerical frequency of the identified fish species varies from one species to another. The species most collected are: *Clariallabes*

brevibarbis with 88 individuals or 7.46%, *Clarias anguillaris* with 82 specimens or 6.95%, *Channallabes apus* with 78 individuals or 6.61%, *Clarias spp* with 76 individuals or 6.44%, *Ctenopoma kingsleyae* with 74 specimens or 6.27%, *Ctenopoma pellegrini* with 72 individuals or 6, 1%, *Ctenopoma ansorgii* with 68 specimens or 5.76%, *Ctenopoma lineatum* with 64 specimens or 5.42%, *Petrocephalus pellegrini* with 64 individuals or 5.42%, *Parachanna obscura* with 62 individuals or 5.25% and

Ctenopoma nanum with 60 specimens or 5.08%. The remains of the species are less representative with a percentage of capture of less than 5%.

Proportion of fish caught according to the fishing stations: The variation in the catch of the different fish species identified in this study according to the study sites is recorded in Table 3.

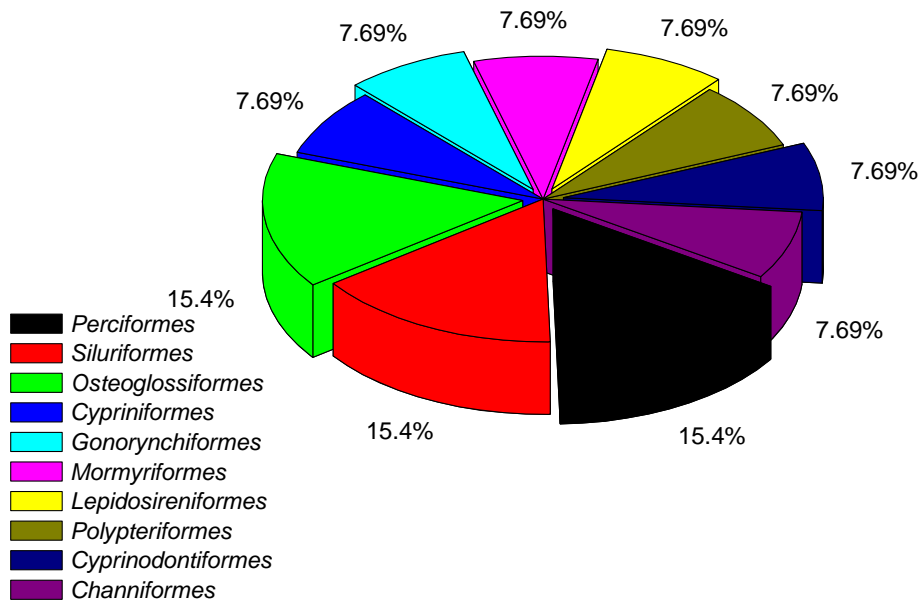


Fig. 2. Relative abundance (%) of the orders of fishes surveyed

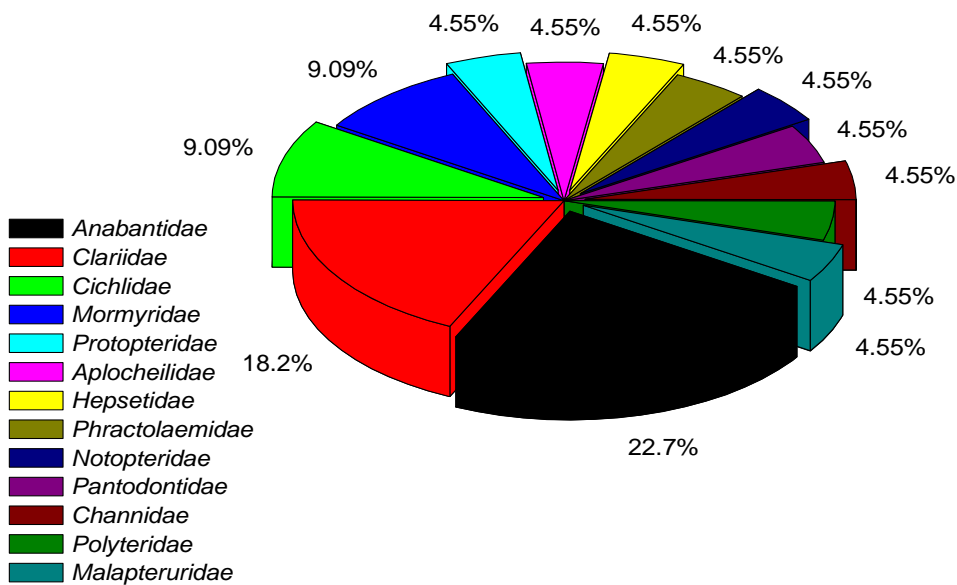


Fig. 3. Relative abundance (%) of identified fish families

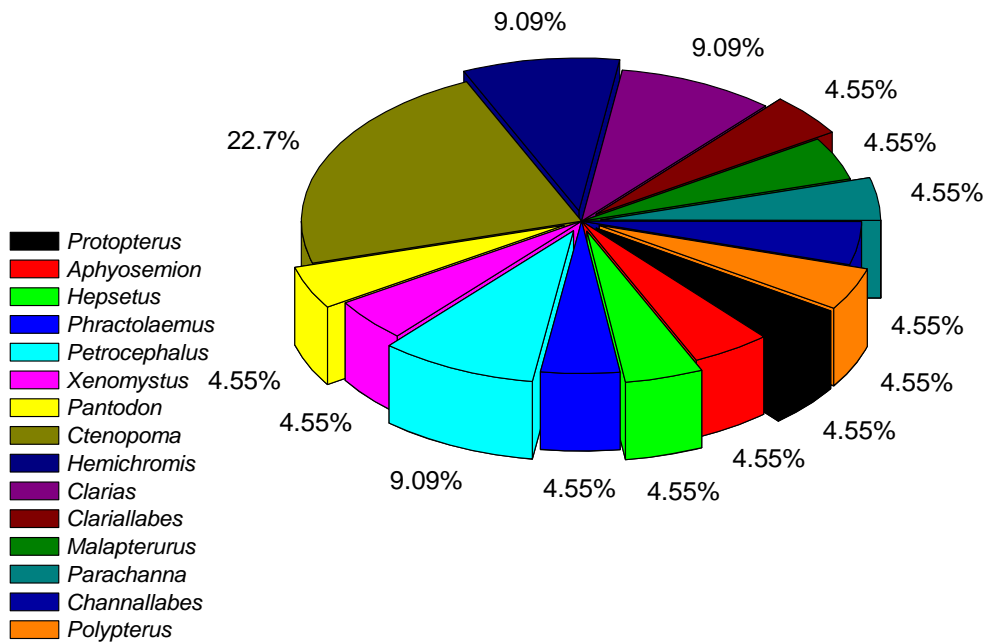


Fig. 4. Relative abundance (%) of the genera of the inventoried fishes

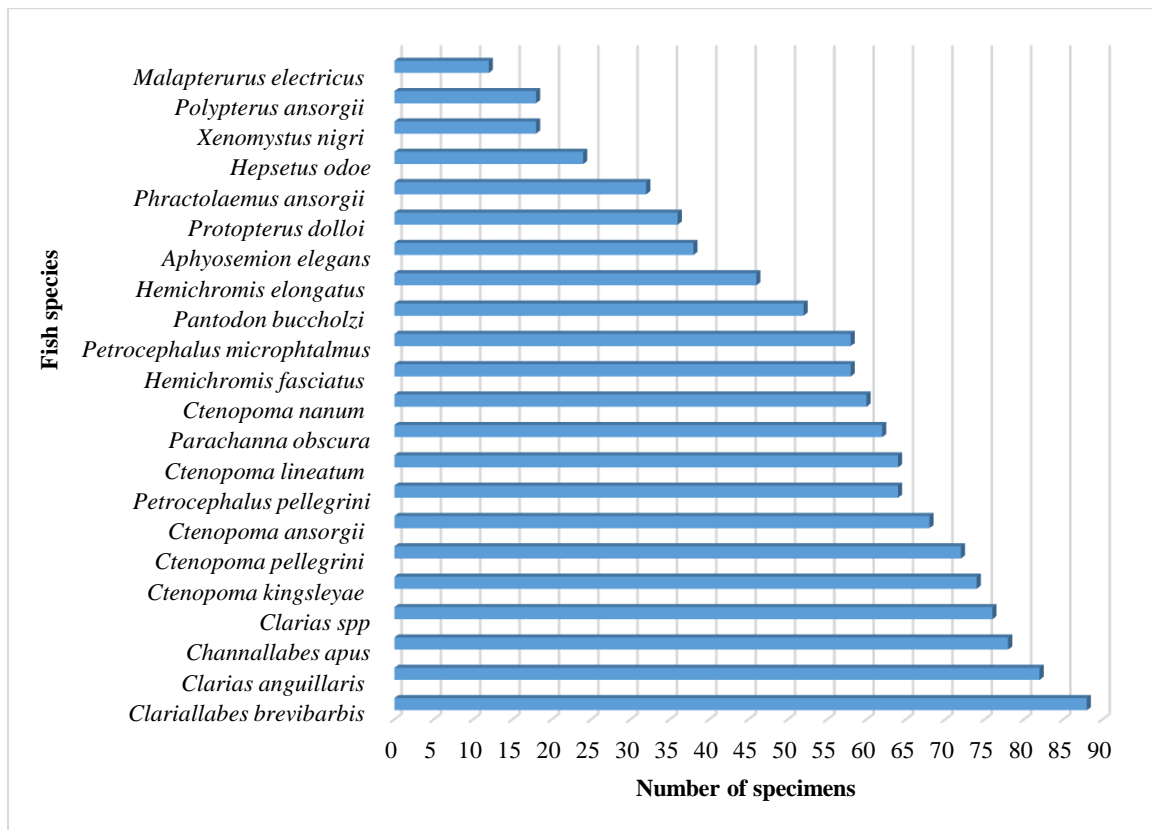


Fig. 5. Numerical frequency of fish species caught

Table 3. Catch proportion of the different fish species identified

Fish species	Study sites					Total
	Longonye	Hongo	Ilungu	Lotende	Membe	
<i>Aphyosemion elegans</i>	8	5	9	9	7	38
<i>Hepsetus odoe</i>	9	0	0	15	0	24
<i>Phractolaemus ansorgii</i>	6	4	9	5	8	32
<i>Protopterus dolloi</i>	7	6	8	5	10	36
<i>Petrocephalus pellegrini</i>	12	14	16	12	10	64
<i>P. microphthalmus</i>	13	15	11	10	9	58
<i>Xenomystus nigri</i>	18	0	0	0	0	18
<i>Pantodon buccholzii</i>	10	11	12	8	11	52
<i>Ctenopoma ansorgii</i>	8	13	10	17	20	68
<i>C. kingsleyae</i>	14	15	16	15	14	74
<i>C. lineatum</i>	8	10	10	16	20	64
<i>C. nanum</i>	10	8	8	15	19	60
<i>C. pellegrini</i>	14	13	16	15	14	72
<i>Parachanna obscura</i>	8	8	12	16	18	62
<i>Hemichromis fasciatus</i>	12	13	12	10	11	58
<i>H. elongatus</i>	10	8	11	9	8	46
<i>Polypterus ansorgii</i>	6	0	0	8	4	18
<i>Channallabes apus</i>	16	14	16	16	16	78
<i>Clariallabes brevibarbis</i>	20	17	18	15	18	88
<i>Clarias anguillaris</i>	18	13	18	16	17	82
<i>C. spp</i>	16	15	14	15	16	76
<i>Malapterurus electricus</i>	7	0	0	0	5	12
22	250	202	226	247	255	1180

The proportion of fish captured varied from site to site and also from species to species. All fish species were captured in the five sampling sites except for *Hepsetus odoe*, *Xenomystus nigri*, *Polypterus ansorgii* and *Malapterurus electricus* which were captured either in one site (*Xenomystus nigri*) or two sites (*Hepsetus odoe* and *Malapterurus electricus*). In terms of number of individuals, the Membe site with 255 specimens, Longonye with 250 specimens and Lotende with 247 individuals are those where fish were collected in large quantities.

3.2. Evaluation of Ecological Indices

3.2.1 Biological diversity indices

The values of the different indices of biological diversity evaluated on the basis of the ichthyological fauna inventoried in the flooded forest located on the Mbandaka-CREF Mabali road axis are shown in Table 4.

According to the results in the table above, all sites show a high species richness that varies between 18 taxa (Hongo and Ilungu) and 22 taxa (Longonye). Simpson's index varies between 0.9382 (Hongo) and 0.9485 (Longonye) and

shows that there is a codominance of species across the five sites. The Shannon-Weaver indices for all sites are greater than 1.5 and indicate that the fish fauna is rich and varied. The Longonye site appears to be the most diverse ($H'=3.027$) and contains 22 species, followed by the Lotende ($H'=2.942$), Membe ($H'=2.915$), and the Hongo and Ilungu sites have 2.828 and 2.856 species respectively. In general, the sites studied indicate a certain balance between the numbers of the different species of fish sampled; the Piélou equitability index varies from 97.31% (Membe) to 98.82% (Ilungu).

3.2.2 Jaccard similarity index

The similarity values of the study sites obtained in relation to fish richness are shown in Table 5.

The similarity matrix established between the five sites studied according to the biological diversity of the fish fauna shows that all these sites are more than 80% similar. The Hongo and Ilungu sites are 100% similar and the Longonye, Ilungu and Lotende sites are 82% similar. The Membe site is 91% similar to the Longonye site and 90% similar to the other three sites.

3.3 Ichthyotoxic Plant Species Identified

The following plants (Table 6) were identified in the study area and are often used by the local population to capture fish.

Ten (10) plant species grouped in seven (7) botanical families are used for fishing fish. For some plant species, the whole plant is used while for others it is either the leaves, fruits, barks, roots and/or flowers that are used.

3.4 Environmental Variables

3.4.1 Physico-chemical parameters

The average values of the physico-chemical parameters of the water collected at the sampling sites are shown in Table 7.

The results in the table above show that the waters are warm with average temperatures ranging from $24.5 \pm 0.7^\circ\text{C}$ (Lotende) to $26.3 \pm 1.2^\circ\text{C}$ (Longonye). The waters are less turbid with average values ranging from 3.8 ± 0.3 (Longonye) to 5.65 ± 0.05 NTU (Membe). These waters are low in ions with average conductivity values between 2.825 ± 0.17 $\mu\text{S}/\text{cm}$ (Membe) and 3.45 ± 0.25 $\mu\text{S}/\text{cm}$ (Lotende). The depth of the water column remained shallow across the different study sites; it ranged from 84.5 ± 38.5 cm (Membe) to 113.75 ± 46.25 cm (Longonye). The waters at the various sampling sites have an acidic hydrogen potential; mean pH concentrations range from 4.135 ± 0.33 (Longonye) to 4.5 ± 0.6 (Hongo). The waters are poorly oxygenated; dissolved oxygen content ranges from 2.852 ± 0.12 mg/L (Membe) to 6.5 ± 0.05 mg/L (Ilungu).

3.4.2 Type of bottom substrate

The composition of the bottom substrate at the sampling sites as visualized in Fig. 6 shows that, at each site, the muddy bottom is dominant and the sandy bottom is very poorly represented. The bottom littered with plant debris comes after the mud and sandy-muddy.

3.5 Anthropogenic Activities in the Study Area

The different human activities identified in the flooded swamp forest along the Mbandaka - Cref Mabali road axis are summarized in Table 8.

From the results recorded in the table above, it appears that several anthropogenic activities are carried out in the study area with possible negative impacts on the aquatic ecosystem and on the health of the population.

3.6 Analysis of the Groupings of Fishing Sites According to Physico-chemical Parameters and Fish Fauna

The similarity dendrogram of the sampling sites established according to the environmental variables as well as the inventoried ichthyological fauna highlights two large groups of sites (Fig. 7) separated by a Euclidean distance of 38 with a very significant difference ($r = 0.8711$). The Membe site alone forms the first group, while the second is made up of the Hongo, Ilungu, Lotende and Longonye sites. The second group is in turn divided into two subgroups where the Hongo, Ilungu and Lotende sites form the first subgroup (29 away) and the Longonye site forms the second subgroup (30 away).

3.7 Correlation between Environmental Variables and Fish Species

The results visualized in Fig. 8 below show that four of the five sites (Hongo, Ilungu, Lotende and Membe) are positively correlated on axis two associated with the fish species *Aphyosemion elegans*, *Hepsetus odoe*, *Ctenopoma ansorgii*, *C. lineatum*, *C. nanum*, *C. pellegrini* and *Polypterus ansorgii* under the influence of four environmental variables: turbidity, conductivity, pH, muddy bottom and a bottom littered with plant debris. The Longonye site is positively correlated with axis 1 where five environmental variables (temperature, depth, dissolved oxygen,

Table 4. Values of biological diversity indices

Calculated indices	Sample sites				
	Longonye	Hongo	Ilungu	Lotende	Membe
Taxa_S	22	18	18	20	20
Simpson_1-D	0.9485	0.9382	0.9406	0.9451	0.9424
Shannon_H	3.027	2.828	2.856	2.942	2.915
Equitability_E	0.9792	0.9785	0.9882	0.9821	0.9731

Table 5. Jaccard's similarity matrix based on the fish fauna of the study sites

	Longonye	Hongo	Ilungu	Lotende	Membe
Longonye	100	82	82	82	91
Hongo		100	100	90	90
Ilungu			100	90	90
Lotende				100	90
Membe					100

Table 6. Piscivorous plants used for fish capture

Family	Species	Vernacular name (Lontomba)	Part used
<i>Acanthaceae</i>	<i>Duvernoya dewevrei</i> De Wild et ThDur	Lwenzeli	Leaves (paste)
<i>Commeliaceae</i>	<i>Palisota barteri</i> Hook	Itétéle	Leaves (dough) and fruit
<i>Liliaceae</i>	<i>Sansiviera trifasciata</i> Prain	Mwela mo nkoy	Leaves (paste)
<i>Loganiaceae</i>	<i>Antocleista schweinfurthii</i> Gild	Ilobo i mai	Crushed bark (paste)
<i>Mimosaceae</i>	<i>Cathornion altissimum</i> Hutch et Danay	Elele	Bark and leaves
	<i>Tephrosia vogelii</i> Hook	Booha	Seedling (sap), leaves, fruits and flowers (sap)
	<i>Pentaclethra eetveldeana</i> De Wild et Th. Dur	Ehili	Trunk bark (crushed)
<i>Sapindaceae</i>	<i>Blighia welwitchii</i> (Hiern) Radl	Booho	Fruits
	<i>Tetrapleura tetraptera</i> (Thonn) Taub	Boléhé	Fruits
<i>Urticaceae</i>	<i>Fleurya podocarpa</i> Weed	Lohambiya	Whole plant (paste)
7	10		5

Table 7. Average values of physico-chemical parameters of water at the sampling sites

Physico-chemical parameters	Sampling sites				
	Longonye	Hongo	Ilungu	Lotende	Membe
Temperature (°C)	26.3±1.2	25.9±0.6	26.1±1.5	24.5±0.7	25.5±1.1
Turbidity (NTU)	3.8±0.3	4.25±0.25	5.05±0.35	5.2±0.3	5.65±0.05
Conductivity (µS/cm)	3.18±0.115	3.1±0.2	3.32±0.475	3.45±0.25	2.82±0.17
Depth (cm)	113.75±46.25	108±41.6	101.5±43.5	102±48	84.5±38.5
pH	4.13±0.33	4.5±0.6	4.45±0.25	4.5±0.4	4.32±0.72
Dissolved oxygen (mg/L)	3.18±0.18	3.45±0.35	6.5±0.05	3.02±0.22	2.85±0.12

sandy bottom and sandy-muddy or gravelly bottom) positively influence the distribution of fourteen fish species (*Phractolaemus ansorgii*, *Protopterus dolloi*, *Petrocephalus pellegrini*, *P. microphthalmus*, *Xenomystus nigri*, *Pantodon buccholzii*, *Ctenopoma kingsleyae*, *Hemichromis fasciatus*, *H. elongatus*, *Channallabes apus*, *Clariallabes brevibarbis*, *Clarias anguillaris*, *C. spp* and *Malapterurus electricus*).

4. DISCUSSION

This study allowed the collection of twenty-two (22) species of fish divided into 15 genera, 13 families and 10 orders. This environment has a fairly diverse fish fauna which can be explained

by the adaptation of these species to the environmental conditions. As stated by Lévêque and Paugy [28], the ichthyological communities of African rivers are very rich because many species adapt to adverse conditions. In terms of species, the catches are dominated in terms of abundance by : *Clariallabes brevibarbis* (7.46%), *Clarias anguillaris* (6.95%), *Channallabes apus* (6.61%), *Clarias spp* (6.44%), *Ctenopoma kingsleyae* (6.27%), *Ctenopoma pellegrini* (6, 1%), *Ctenopoma ansorgii* (5.76%), *Ctenopoma lineatum* (5.42%), *Petrocephalus pellegrini* (5.42%), *Parachanna obscura* (5.25%) and *Ctenopoma nanum* (5.08%). These results are close to the observations made by Boika et al, [19]; Bila-Isia and Zanga [29]; Snoek et al, [30].

The *Perciformes* and *Siluriformes* are among the most represented orders in the ichthyological province of Congo and in other forest ecosystems of Central Africa [19].

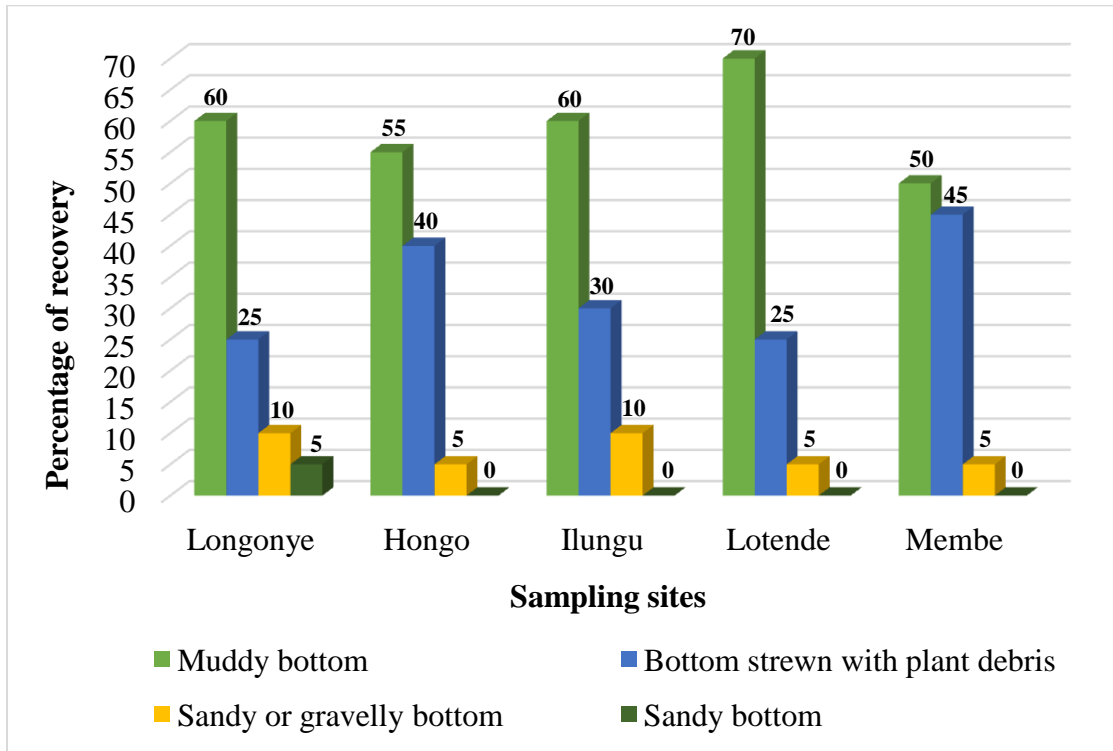


Fig. 6. Composition of the bottom substrate at the sampling sites

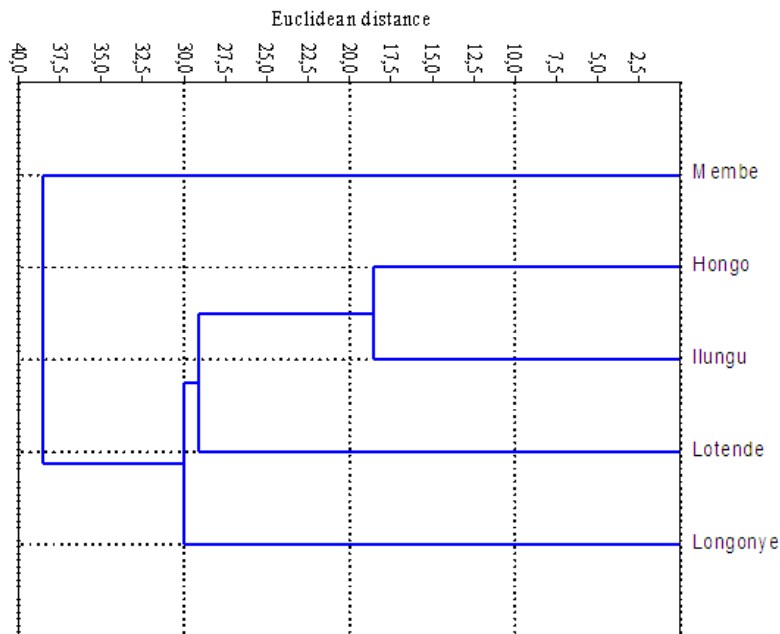


Fig. 7. Ascending Hierarchical Classification Dendrogram of fishing sites according to abiotic variables and fish fauna

Table 8. Human activities identified at the study sites

N°	Nature of the activity	Corporate purpose	Probable impacts on humans and ichthyofauna
1	Slash and burn agriculture	Production of food crops for consumption and sale. Source of income for the local population.	During low water, large dry portions of the swamp forest are cut down for food crops, resulting in : - Disappearance of important portions of the swamp forest; - Organic pollution: increased turbidity and acidity threaten fish habitat.
2	Search for building materials: <i>Eremospatha macrocarpa</i> lianas, <i>Raphia sese</i> and <i>Raphia laurentii</i> main veins, and <i>Sclerosperma manii</i> leaves	Housing construction and source of income	Organic pollution
3	Felling of trees	Commercial exploitation of wood: timber, firewood and charcoal: source of income for the impoverished population.	Deforestation: disappearance of large areas of swamp forest.
4	Artisanal fishing	Capture of fish for consumption and incidentally for sale in case of abundant fishing.	Water pollution by ichthyotoxics, exposure of the population to the harmful effects of toxic products, destruction of fish habitats by inappropriate fishing techniques, such as stumping (destroys spawning grounds and in the long run can lead to the scarcity or disappearance of certain species) and scooping which captures fish of all ages, adults, juveniles and fry.
5	Housework (Bathing, Laundry, Dishwashing, Excreta disposal, Car, bike and motorcycle washing)	Housework and personal hygiene.	Water pollution by the contribution of organic and chemical pollutants, Exposure of the population to water-borne diseases.

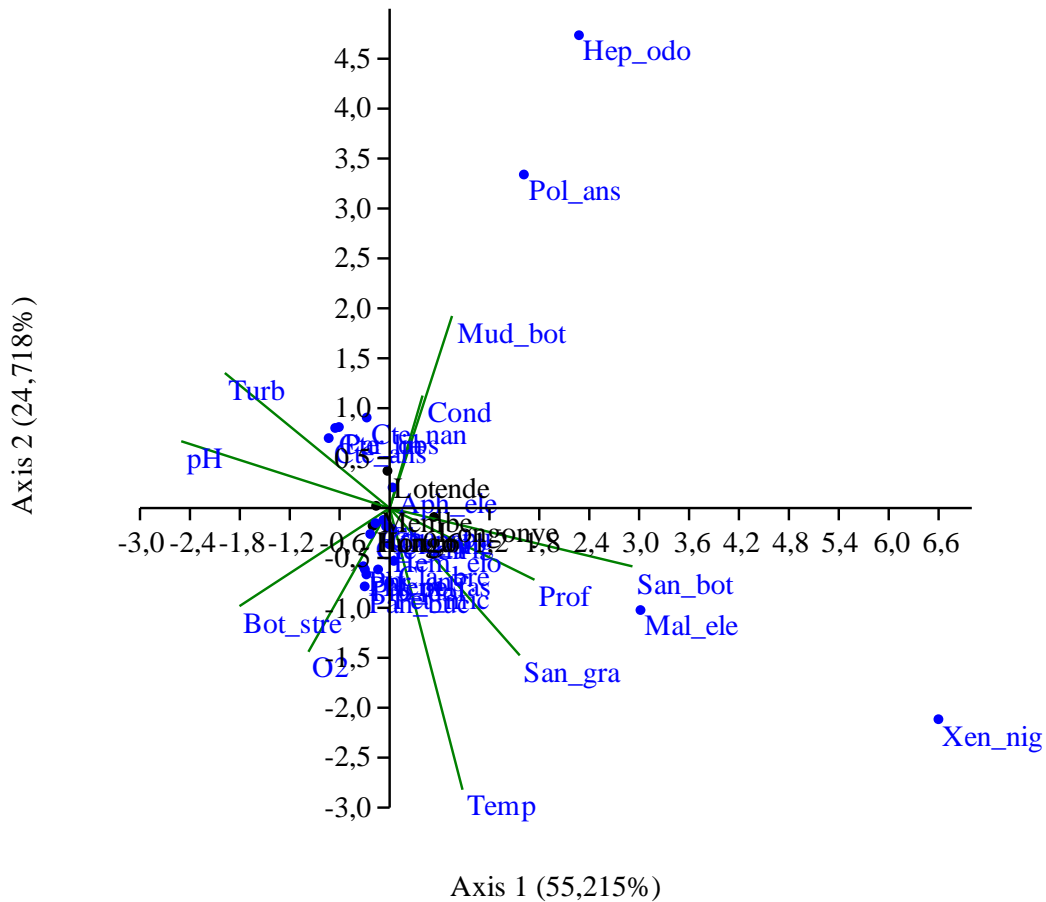


Fig. 8. Diagram of the Canonical Correspondence Analysis between the fishing sites, the abiotic variables and the inventoried fish fauna

Legend: Temp = Temperature, Turb = Turbidity, Cond = Conductivity, Prof = Depth, pH = Hydrogen potential, Fon_vas = Muddy bottom, Fon_sab = Sandy bottom, Fon_grav = Sandy-muddy or gravelly bottom, Fon_veg = Bottom littered with debris, vegetation, Aph_ele = Aphyosemion elegans, Hep_odo = Hepsetus odoe, Phr_ans = Phractolaemus ansorgii, Pro_dol = Protopterus dolloi, Pet_pel = Petrocephalus pellegrini, Pet_mic = Petrocephalus microphthalmus, Xen_nig = Xenomystus nigri, Pan_buc = Pantodon buccholzii, Cte_ans = Ctenopoma ansorgii, Cte_kin = Ctenopoma kingsleyae, Cte_lin = Ctenopoma lineatum, Cte_nan = Ctenopoma nanum, Cte_pel = Ctenopoma pellegrini, Par_obs = Parachanna obscura, Hem_fas = Hemichromis fasciatus, Hem_elo = H. elongatus, Pol_ans = Polypterus ansorgii, Cha_apu = Channallabes apus, Cla_bre = Clariallabes brevibarbis, Cla_ang = Clarias anguillaris, Cla_spp = Clarias spp and Mal_ele = Malapterurus electricus.

These observations are similar to those reported by Matthes [20] in the flooded forest and marshes of Lake Tumba. The latter reports thirty-one (31) species inventoried during his study in the flooded forest and ponds, while twenty-two (22) species constitute the sample of this study in the same biotope. Matthes [20] collected fifteen (15) species that were not recorded in the present study and nine (9) species recorded in this study were not reported by Matthes [20]. The difference in these results could be explained by the fishing techniques used, the extent exploited as well as the duration of the sampling. This situation would also be the result of a disturbance induced by fishing

pressure and anthropic activities that have developed over time.

Regarding the evaluation of diversity indices, all sites showed a high specific richness that varied between 18 taxa (Hongo and Ilungu sites) and 22 taxa (Longonye site). This richness is thought to be related to the availability of varied food resources in the study area. According to Pwema [31], the diversity of ecological niches has the potential to provide rich biological diversity. Simpson's index showed that there is a codominance of species across the five sites [32], the value of this index ranged from 0.9382 (Hongo site) to 0.9485 (Longonye site). The Shannon-Weaver indices for all sites indicated

that the fish fauna is rich and varied. The Longonye site with 22 species was the most diverse ($H'=3.027$), followed by the Lotende ($H'=2.942$), Membe ($H'=2.915$) and the Hongo and Ilungu sites had 2.828 and 2.856 respectively. In general, the sites studied indicated a certain balance between the numbers of the different fish species sampled; the Piélou Equitability Index varied from 97.31% (Membe) to 98.82% (Ilungu). These results corroborate those reported by Boika et al. [19]; Wamuini [33]; Hermi & Aissa [34] and reflect a rich trophic composition of the hydrographic network of the surveyed area.

Jaccard's similarity matrix established between the five sites studied according to the biological diversity of the fish fauna showed that all the sites are more than 80% similar and contain almost the same fish species. The Hongo and Ilungu sites are 100% similar and the Longonye, Ilungu and Lotende sites are 82% similar. The Membe site is 91% similar to the Longonye site and 90% similar to the other three sites. These observations are also confirmed by the ascending hierarchical classification of sites. This analysis showed that the Membe site alone forms the first group, while the second group was formed by the Hongo, Ilungu, Lotende and Longonye sites. This rapprochement of the groups shows a similarity linked to the very close abiotic and biotic characteristics between the different sites [35]. The equitable occupation of the fish species can be justified by the complexity of the food web, which gives the possibility to the different species to exploit different areas without competing [31,36].

The results obtained from the physico-chemical parameters showed that the waters were warm with mean temperatures ranging from $24.5\pm 0.7^\circ\text{C}$ (Lotende) to $26.3\pm 1.2^\circ\text{C}$ (Longonye); they were less turbid with mean values ranging from 3.8 ± 0.3 NTU (Longonye) to 5.65 ± 0.05 NTU (Membe). According to Lévêque and Paugy [28], throughout intertropical Africa, average water temperatures are high and most often above 20°C and follow that of the ambient air. Matthes [20] reports that forest shading has a significant effect on the average temperature of rivers and stagnant waters, where the temperature is generally very high (28 to 38°C), even under vegetation cover [19]. The turbidity averages obtained would be related to precipitation, which has the effect of increasing suspended matter inputs through runoff [19], which in turn increases turbidity and decreases the

transparency of the water [37]. The waters were low in ionic load with average conductivity values ranging from 2.825 ± 0.17 $\mu\text{S/cm}$ (Membe) to 3.45 ± 0.25 $\mu\text{S/cm}$ (Lotende). The conductivity values are closer to those obtained by Boika et al, [19]. The prevalence of muddy and sandy bottoms justifies the abundance of capture of fish species of the genera *Petrocephalus*, *Hemichromis*, *Clarias*, *Ctenopoma* and *Clariallabes* that would have a preference for these types of mud. The waters at the different sampling sites showed an acidic hydrogen potential; with average pH values ranging from 4.135 ± 0.33 (Longonye site) to 4.5 ± 0.6 (Hongo site). The acidic pH values found are close to those obtained by Boika et al, [19] and would therefore be caused by dissolved thermostable humic matter, originating from the decomposition of organic matter; this even gives the waters of the study area a black hue [19]. The waters are poorly oxygenated; dissolved oxygen content ranges from 2.852 ± 0.12 mg/L (Membe) to 6.5 ± 0.05 mg/L (Ilungu). The low levels of dissolved oxygen obtained would be a function of the acidity of the water due to the abundance of organic matter in the water [19], which decreases the level of dissolved oxygen through the reduction and release of ferrous oxides that absorb a significant portion of the dissolved oxygen [20].

Various environmental parameters and site characteristics influence the distribution and abundance of a large number of ichthyological species in the flooded swamp forest of the Mbandaka - CREF Mabali road axis. The canonical correspondence analyses showed that the Longonye site was positively correlated with axis 1 where five environmental variables including temperature, depth, dissolved oxygen, sandy bottom as well as sandy-muddy or gravelly bottom would explain the abundance and distribution of fourteen fish species including: *Phractolaemus ansorgii*, *Protopterus dolloi*, *Petrocephalus pellegrini*, *P. microphthalmus*, *Xenomystus nigri*, *Pantodon buccholzii*, *Ctenopoma kingsleyae*, *Hemichromis fasciatus*, *H. elongatus*, *Channallabes apus*, *Clariallabes brevibarbis*, *Clarias anguillaris*, *C. spp* and *Malapterurus electricus*. On the other hand, the Hongo, Ilungu, Lotende and Membe sites were positively correlated with axis two associated with the fish species *Aphyosemion elegans*, *Hepsetus odoe*, *Ctenopoma ansorgii*, *C. lineatum*, *C. nanum*, *C. pellegrini* and *Polypterus ansorgii* whose distribution was influenced by four environmental variables:

turbidity, conductivity, pH, muddy bottom as well as the bottom littered with plant debris. Several researchers have also demonstrated the influence of environmental variables on the abundance and distribution of aquatic species: shrimp [27,38], fish [35,39] and benthic macroinvertebrates [40,41].

5. CONCLUSION AND PERSPECTIVES

The objective of this study was to evaluate the influence of physico-chemical parameters on the abundance and distribution of fish species that inhabit the flooded swamp forest of the Lake Tumba micro-basin located on the Mbandaka-CREF-Mabali road axis in the territory of Bikoro, Equateur province in the Democratic Republic of Congo.

The results obtained showed that the ichthyological fauna of this environment is quite diversified. Twenty-two species of fish were caught during the sampling period. These fishes belong to 10 orders, 13 families and 15 genera. The evaluation of abiotic variables showed that the waters of the study area are characterized by low values of physico-chemical parameters within the ranges compatible with the survival of the local fish fauna. Five environmental variables, including temperature, depth, dissolved oxygen, sandy bottom and sandy-muddy or gravelly bottom, explain the abundance and distribution of fourteen species of fish at the Longonye site, while turbidity, conductivity, pH, muddy bottom and bottom strewn with plant debris influence the abundance and distribution of fish at the Hongo, Ilungu, Lotende and Membe sites. Scoop fishing, stump removal, and the use of ichthyotoxic plants have been the main anthropogenic activities that have the potential to compromise the natural capital of the local ichthyofauna and negatively affect fish habitats and the hydrosystem. Promoting sustainable local fishing methods and prohibiting anthropogenic activities that may cause deterioration of fish habitats and alter water quality would help preserve the fish fauna of the study area.

ACKNOWLEDGEMENTS

We would like to thank Mr. BUYA SABIN, researcher at the Center for Research in Ecology and Forestry CREF/Mabali for the collection and identification of ichthyotoxic plants used in our study area as well as the fishermen who were associated with the collection of fish

specimens: MANDA Alain, MPUTU More, MBALAKA Mongu, AMBA LIEMA Luta, BOMBULA Sika, MPUTU Iyaha, NIMA MONDOKO Mamie, BOYENGA Esika, IYELI NGENGE Platini and NDIINGA Trésor.

COMPETING INTERESTS

Authors have declared that no competing interests exist.

REFERENCES

1. Lusasi SW, Makiese MP, Kunonga NL, Munganga KC, Kavumbu MS, Pwema KV. Proportion of sales of local and imported fresh fish in the markets of Kinshasa in the Democratic Republic of Congo (case of the markets of Freedom of Masina and Central of Kinshasa). *Journal of Applied Biosciences*. 2019;141:14353–14363. Available:<https://dx.doi.org/10.4314/jab.v141i1.2>
2. Paugy D, Lévêque C. A biological model for biodiversity research. In: Lévêque C. & Paugy D. (Eds). *Fishes of African continental waters: diversity, ecology and human use*. IRD, Paris. 2006; 7-10.
3. Lusasi SW, Manza RK, Bipendu MN, Kavumbu MS, Munganga KC, Gafuene N, Pwema KV. Analysis of the ichthyological composition of smoked fish sold in the Liberté and Gambela markets in Kinshasa, Democratic Republic of Congo. *Agricultural Science*. 2020; 2(2):69-79. Available:<https://doi.org/10.30560/as.v2n2.p69>.
4. Masua TB, Lusasi SW, Munganga KC, Wumba MP, Kavumbu MS & Pwema KV. Inventory of fresh fish marketed in the markets of Kinshasa in the Democratic Republic of Congo (case of the Gambela and Matete markets). *International Journal of Applied Research*. 2020;6(4):102-108.
5. Maps JE, Fanelli E, Papiol V & Maynou F. Trophic relationships at intraannual spatial and temporal scales of macro and megafauna around a submarine canyon off the Catalonia coast (western Mediterranean). *Journal of Sea Research*. 2010;63:180-190.
6. Rafalimanana T. Penaeid shrimp exploited on the west coast of Madagascar: spatiotemporal variability of biological parameters and population dynamics. Doctoral thesis, University of Rennes 1, France. 2003;268.

7. Ahouansou MS. Diversity and exploitation of fish from the Pendjari River (Benin, West Africa). Doctoral thesis from Abomey-Calavy University, Benin. 2011; 216.
8. Yao AA, Konan KM, Doumbia L, Ouattara A, Gourene G. Diversity and Structure of the Fish Population of the Lower Basin of the Comoé River (Côte d'Ivoire). *European Scientific Journal*. 2019;15(6):244-268. Available:<http://dx.doi.org/10.19044/esj.2019.v15n6p244>.
9. Falaise P. Fish parasites: agents of zoonoses. Exercise thesis, National Veterinary School of Toulouse, Paul-Sabatier University of Toulouse, France. 2018;248.
10. Munganga KC, Kavumbu MS, Bipendu MN, Kunonga NL, Lusasi SW, Pwema KV. Assessment of the ecological quality of the Musolo River at Kinkole based on benthic macroinvertebrates (Kinshasa, R.D Congo). *European Journal of Scientific Research*. 2020;155(2):162-176.
11. Katemo BM, Colinet G, André L, Chocha AM, Marquet JP, Micha JC. Evaluation of the contamination of the trophic chain by trace elements (Cu, Co, Zn, Pb, Cd, U, V and As) in the upper Lufira basin (Katanga/DR Congo). *Tropicultura*. 2010; 28(4):246-252.
12. Kashimbo KS, Mukanya SS, Mukoj KA, Mwenge TL, Kesonga NM, Meli K, Kiyukeno KY. Impact studies of liquid discharges from the STL plant (Terril Company of Lubumbashi) on the Lubumbashi River (Haut-Katanga/DR. Congo). *International Journal of Innovation and Scientific, Research*. 2016;21(2): 285-292.
13. Mata KH, Mohammed MAD, Ngweme NG, Konde NJ, Mulaji KC, Kiyombo MG, Poté WJ. Toxic metal concentration and ecotoxicity test of sediments from dense populated areas of Congo River, Kinshasa, Democratic Republic of the Congo. *Environmental chemistry and ecotoxicology*. 2020;2:83-90.
14. Mwanamoki PM, Naresh D, Niane B, Ngelinkoto P, Thevenon F, Nlandu JW, Mpiana TP, Prabakar K, Mubedi IJ, Kabele GC, Wildi W, Poté J. Trace metal distributions in the sediments from river-reservoir systems: case of the Congo River and Lake Ma Vallée, Kinshasa (Democratic Republic of Congo). *Environ Sci. Pollut Res*. 2014;10:11356-3381.
15. Nzapo KH, Ngbolua KN, Bongema AL, Bongo NG, Inkoto LC, Falanga MC, Ashande MC, Ndembo NJL, Lokilo LE, Djoza DR. Evaluation of the bioaccumulation of heavy metals in *Clarias gariepinus* (Burchell, 1822), *Chrysichthys nigrodigitatus* (Lacepède, 1803), *Mormyrops anguilloides* (Linnaeus, 1758) and *Coptodon rendalli* (Boulenger, 1897). *International Journal of Innovation and Scientific Research*. 2018;38(1):185-191.
16. Nsimanda IC, Musibono ED, Basosila LN, Wanga BMB. Preliminary study of Cadmium and Lead contamination of *Distichodus fasciolatus*, *Mormyrops anguilloides* and *Schilbe mystus* in Pool Malebo (Congo River - Kinshasa/DR Congo) in Kinsuka. *International Journal of Innovation and Applied Studies*. 2015a; 10(1):176–183.
17. Nsimanda IC, Musibono ED, Basosila LN, Wanga BMB. Contribution to the ecotoxicological study of Cadmium and Lead in *Distichodus fasciolatus*, *Mormyrops anguilloides* and *Schilbe mystus* in Pool Malebo (Congo River - Kinshasa/DR Congo) in Maluku. *International Journal of Innovation and Applied Studies*. 2015b;10(1):166–175.
18. Micha JC. Inland fisheries sick with malaria in Central Africa. *Tropicultura*. 2019;37(1). Available:<https://popups.uliege.be:443/2295-8010/index.php?id=266>.
19. Boika MNA, Pwema KV., Lusasi SW, Musibono ED, Ifuta NBS. Ichthyological diversity of the Flooded Swamp Forest of the Lake Tumba Hydrographic Network on the Mbandaka-CREF Mabali Road Axis in Bikoro, Equateur Province (DR Congo). *International Journal of Progressive Sciences and Technologies*. 2021; 25(2):156-168.
20. Mathes A, The Fishes of Lake Tumba and the Ikela region: systematic, ecological and biogeographical studies. *Ann. Mus. Roy. Afr. Center*. 1964;126:204.
21. Poll M, Gosse JP. Genera of freshwater fish from Africa. *Class of Sciences, Royal Academy of Belgium*. 1995;324.
22. Lévêque C, Paugy D, Teugels GG. Fresh and brackish water fish fauna of West Africa. *ORSTOM, RMCA, Tervuren, Belgium*. 1990, 1992;1-2: 907.
23. Mbega JD, Teugels GG. Guide to determining poisons in the lower Ogooué

- basin. IRAF/Gabon, University Press of Namur, Belgium. 2003;16.
24. Stiassny LJM, Teugels GG & Hopkins CD. Freshwater and brackish fish from Lower Guinea: West Central Africa. IRD Editions, Royal Museum for Central Africa, Tervuren, Belgium, Fauna and Flora Collection, Paris. 2007;1-2:1467.
 25. APG III. Angiosperms phylogeny GROUP. An ordinal classification of families of flowering plants. *Ann. Missouri Bot. Gard.* 1988;(85):521-553. Original UREL. Available: <http://www.systbot.uu.se/classification/APG>.
 26. Mondo MT, Pwema KV, Lusasi SW, Gizanga VR, Nsimanda IC, Wafula M & Musibono EAD. Evaluation of the metallic and biological profile of atmospheric air pollution in the city Province of Kinshasa, Democratic Republic of Congo. *International Journal of Applied Research.* 2020;6(8):115-123.
 27. Eume LT, Lusasi SW, Nsimanda IC, Isumbisho MP, Pwema KV. Contribution to the knowledge of freshwater shrimps (Crustacea, Decapoda) and their spatial distribution in the Malebo Pool (Congo River), R.D Congo. *Annual Research & Review in Biology.* 2022;37(5):30-43. DOI: 10.9734/ARRB/2022/v37i530508.
 28. Lévêque C, Paugy D. Fishes of African continental waters. Diversity, ecology and human use. IRD, Paris. 1999; 521p.
 29. Bila-Isia I, Zanga LN. Fish inventories in Lake Tumba, Congo and Ngiri, Lac Télé landscape, Lac Tumba, R.D.C. Report produced within the framework of the CARPE Programme, WWF-Democratic Republic of Congo Programme. 2007;24 .
 30. Snoeks J, Harrison IJH, Stiassny MLJ. Status and distribution of freshwater fishes. In: Darwall W.R.T., Smith K.G., Allen D.J., Holland R.A., Harris I.J., Brooks E.G.E. (2011). *The Diversity of Life in African Freshwater: Under Water, Under Threat. An analysis of the status and distribution of freshwater species throughout mainland Africa.* Cambridge, United Kingdom and Gland, Switzerland: IUCN. 2011;42-91.
 31. Pwema KV. Food ecology, reproduction and mode of adaptation of five species of Labeo Cuvier, 1817 in lentic environments and rapids at Pool Malebo in the river. Doctoral thesis in Biological Sciences, University of Kinshasa, R.D Congo. 2014; 163.
 32. Ntumba MJM, Mbadu ZV, Pwema KV, Pigneur LM, Michaux RJ & Micha JC. Impact of environmental features on the distribution of Marcusenius species (Pisces, Mormyridae) in Malebo Pool of Kinshasa in the Congo River. *African Journal of Environmental Science and Technology.* 2022;16(5):164-172. DOI: 10.5897/AJEST2022.
 33. Wamunini LS. Ichthyofauna of the Inkisi basin: Diversity and ecology. Doctoral thesis, University of Liège. 2010;304.
 34. Hermi M, Aissa P. Impact of anthropization of the southern lake of Tunis (Tunisia) on the automal structure of free-living nematode populations. *Bull. Inst. Natn. Tech. Sea of Salammbo.* 2002;29:77-85.
 35. Sisa ME, Mukwita NJ, Mutambel H, Pwema KV. Contribution to the study of the structure and dynamics of fish populations in the rivers of the city of Kinshasa: Case of the Lukunga river. *International Journal of Innovation and Applied Studies.* 2018;24(3):1357-1371.
 36. Tembeni MTJ. Structure of Mochokidae fish communities (Ostariophysi, Siluriformes) in Malebo Pool (Congo River), D.R. Congo in relation to spatio-temporal distribution, trophic niche and demographic strategy. Doctoral thesis in Biological Sciences, University of Kinshasa, D.R. Congo. 2017;303.
 37. Dajoz R. Summary of ecology. 6th ed., Dunod, Paris. 1996;551.
 38. Djiriéoulou KC, Bamba M, Konan KM, N'Zi KG, Gooré Bi G, Tidiani Koné T. Population of the shrimp fauna of the Tanoé-Ehy Marsh Forest (South-East of Côte d'Ivoire). *Journal of Applied Biosciences.* 2017;112:11100-11110. Available: <https://dx.doi.org/10.4314/jab.v112i11.15>.
 39. Pwema KV, Mbomba BN, Pigneur LM, Takoy L, Micha JC. Environmental variables structuring Labeo species (Pisces, Cyprinidae) in Malebo Pool, Congo River. *International Journal of Biological and Chemical Sciences.* 2011; 5(2):507-514.
 40. Diomandé D, Bony YK, Edia EO, Konan KF & Gourène G. Benthic macroinvertebrate diversity of the Agnéby River (Côte d'Ivoire: West Africa) *European Journal of Scientific Research.* 2009;35(3):368-377.

41. Kamb TJC, Ifuta NS, Mbaya NA & Pwema KV. Influence of the substrate on the distribution of benthic macroinvertebrates in a lotic system: case of the Gombe, Kinkusa and Mangengenge rivers. *Int. J. Biol. Chem. Sci.* 2015;9(2):970-985.

© 2022 Boika et al.; This is an Open Access article distributed under the terms of the Creative Commons Attribution License (<http://creativecommons.org/licenses/by/4.0>), which permits unrestricted use, distribution, and reproduction in any medium, provided the original work is properly cited.

Peer-review history:
The peer review history for this paper can be accessed here:
<https://www.sdiarticle5.com/review-history/88725>