



Histopathology and Morphometric Characters of *Tilapia guineensis* as Biomarker to Evaluate Level of Environmental Stress in Badagry and Ojo Creeks, Lagos, Nigeria

Aderinola Oluwatoyin Joseph ^{a*}, Adu Ayotunde Abosede ^b, Kusemiju Victor ^a,
Mekuleyi Gabriel Olarinde ^c and Awopetu Oluwapelumi Elizabeth ^a

^a Department of Zoology and Environmental Biology, Lagos State University, Nigeria.

^b Department of Botany, Lagos State University, Nigeria.

^c Department of Fisheries, Lagos State University, Nigeria.

Authors' contributions

This work was carried out in collaboration among all authors. All authors read and approved the final manuscript.

Article Information

DOI: 10.9734/AJOB/2022/v14i130204

Open Peer Review History:

This journal follows the Advanced Open Peer Review policy. Identity of the Reviewers, Editor(s) and additional Reviewers, peer review comments, different versions of the manuscript, comments of the editors, etc are available here: <https://www.sdiarticle5.com/review-history/82832>

Original Research Article

Received 10 November 2021

Accepted 20 January 2022

Published 22 January 2022

ABSTRACT

Forty wild adult *Tilapia guineensis* were sourced from Ojo and Badagry creeks between January and March 2021, to investigate its morphometric character (total length, body weight, standard length, and head depth) and tissues structure (gill, muscle and small intestine) differences. Samples were collected and analysed using standard methods. The results showed no significant difference ($P < 0.05$) between the mean total length, body weight, standard length, and head depth of *Tilapia guineensis* recorded from both creeks. Length-weight relationships of *T. guineensis* obtained from both creeks showed negative allometry ($b < 3$) growth pattern while its condition factor (k) value was more significant than one, which indicated that the fishes are in good condition. Muscle of *T. guineensis* from Ojo creek showed a severe lesion of muscle bundle, degeneration of muscular bundle and shortening of bundles. Similarly, the gills structure of *T. guineensis* from Ojo creek showed severe degeneration, hyperplasia of secondary gill lamellae, and curling of secondary lamellae with unclear water channels. It is also characterized by hypertrophy of lamellae, and there is evidence of partial fusion of lamellae and dilation of gill filament. The observation of none lesion

*Corresponding author: E-mail: oluwatoyin.aderinola@lasu.edu.ng;

or degenerated tissues of *T. guineensis* in Badagry creek could suggest that Ojo creek is more subjected to effluents or other environmental stressors than Badagry creek. In conclusion, *T. guineensis* from Badagry creek is less affected by any environmental contaminants than *T. guineensis* from Ojo creek. Therefore, a collective effort towards ensuring reduction in direct discharge of untreated effluent or avoidance of another unhygienic usage of the creeks is very pertinent.

Keywords: *Tilapia guineensis*; environmental contaminants; growth; histopathology; creeks.

1. INTRODUCTION

Tilapia guineensis (Bleeker, 1862) is a widespread species known to inhabit a variety of habitats such as open and closed estuaries, permanent and temporary rivers, large equatorial lakes, tropical and subtropical rivers, lagoons, swampy lakes, and coastal brackish lakes [1-3]. *Tilapia* is a highly nutritious food, and it is particularly valued for its beneficial qualities, which are attributed to its wealth of nutrients, minerals, protein, omega-3 fatty acids, selenium, phosphorous, potassium, vitamin B12, niacin, vitamin B6, and pantothenic acid [4].

The phenotypic plasticity of fish allows them to respond adaptively to environmental change by modification in their behaviour and physiology, which leads to changes in their morphology, reproduction or survival that mitigate the effects of environmental variation [5-6]. With the growth of human populations and commercial industries, brackish water has received large amounts of pollution from various sources such as recreation, fish culture and the transport of pollution effluents through the river [7]. These situations have generated tremendous pressure on the ecosystem, resulting in decreased water quality and biodiversity loss of critical habitats [8,9].

Despite the advent of techniques that directly examines biochemical or molecular genetic variation, the analysis of phenotypic variation in morphometric characters or meristic counts is the method most commonly used to delineate stocks of fish [10- 11]. However, environmental disturbances could also induce changes in the same organism[12-13].

Like any other morphometric character, the length-weight relationship can be used as a character for the differentiation of taxonomic units and the relationship changes with the various developmental events in life such as metamorphosis, growth and onset of maturity [14]. Condition factor is also a useful index for

monitoring feeding intensity, age, and growth rates in fish [15]. It is strongly influenced by both biotic and abiotic environmental conditions and can be used as an index to assess the status of the aquatic ecosystem in which fish live [16].

Some literature has revealed the use of morphological examinations of fish organs to evaluate the effect of pollutants in fish [17]. That is why histopathological assessment of fish allows for early warning signs of disease and detection of long term injury in cells, tissues and organs before apparent manifestations. It is well known that aquatic pollution causes severe physiologic and morphologic alterations in aquatic organisms [18-19]. Effluents have been demonstrated to affect fish health, causing histological lesions and higher susceptibility to infectious diseases [20-21]. Thus analysis of biochemical and histopathological changes is often used to assess the effect of effluents on different tissues in the field and experimental studies.

Though reports of histopathological evaluation of toxicants effects in *Tilapia spp* exist [22-23], there is no information on the histopathological assessment of *Tilapia guineensis* in Ojo and Badagry creeks. Therefore this study aims to compare some morphometric characters (Total length, standard length, body weight, and head depth), and histopathology of *Tilapia guineensis* from Ojo and Badagry creeks measure of assessing the impact of environmental contaminants on the well being of this species.

2. MATERIALS AND METHODS

2.1 Study Area

The study areas are Ojo and Badagry creeks (Image 1). Badagry creek is approximately 60 km long and 3 km wide and lies between longitude 2° 42' and 3° 23'E and latitude 6°23' and 6°28' N. It is part of a continuous system of lagoons and creeks along the coast of Nigeria from the border with the Republic of Benin to the Niger

delta. Its water depth ranges from 1- 3m. The creek experiences two broad seasons: the dry season (December - May) and the wet season (June - November). It is characterized by fresh and slightly brackish water most of the year. The creek is approximately equidistant from the entrances of Lagos and Cotonou harbours. As a result, it is influenced by tides and floods from the Lagos Lagoon and Cotonou harbour through Lake Nokue and Lake Porto-Novo [24]. On the other hand, Ojo creek is an extension of Badagry creek one of the marginal estuaries' characteristic of the West African coastline [24].

2.2 Collection of Samples

Forty wild adult *Tilapia guineensis* were sourced from Ojo and Badagry creeks between January and March 2021. They were collected from fishermen at the landing sites and transported to the laboratory of the Department of Fisheries, Lagos State University, where they were kept in the fridge for two days.

2.3 Morphometric Parameters

The weight and length of each fish were determined using Mettler balance with a sensitivity of 0.01 g and measuring tape to the nearest 0.1cm, respectively. Before measurement, Fish were defrosted at room temperature (25°C). Morphometric characters including head depth, standard length and the total length were measured with measuring board of precision of 0.1 cm. Description of the dimension of each morphometric distance has already been documented in the literature [25].

2.4 Length Weight Relationship and Condition Factor

The fish samples' length and weight relationship (LWR) were calculated using the equation $W=aL^b$. In $W = \ln a + b \ln L$ [26].

Where

W = Weight of fish in (g), L = Total length (TL) of fish in (cm), a = Constant (intercept) i.e a coefficient related to body form, and b = slope (change in weight per unit change in length) and is an exponent coefficient indicating the growth type. The "a" and "b" values were obtained from a linear regression of the length and weight of the fish measured. The data collected were validated by analyzing the graph corresponding

to length-weight relationships [27]. The degrees of association between the variables were assessed by the determination coefficient (r^2).

Condition factor (k) of the fish specimens in this study was determined by using the formulae:

$k = 100W/L^3$, where: W=body weight of the fish, and L = total length of the fish.

2.5 Histopathological Examination

The extracted tissues (gills, small intestine and muscle) of *T. guineensis* were fixed in 10% formalin for 24hour, cleared in xylene, embedded in paraffin wax and sectioned at 5µm. Hematoxylin and Eosin were used for histological evaluation [28]. Photographs were taken using canon digital camera power shot (SX170 IS) with 64-megapixel sensor (focal length: 28-448mm, 7.5cm (3.0") TFT).

2.6 Data Analysis

Data for the Length-weight relationship of the fish samples were computed using Excel 2007. All morphometric data obtained were expressed as mean \pm standard deviation. Statistical comparison between morphometric data collected was tested with independent student t-test with values of $p < 0.05$ being considered significant. Also, in order to determine the kind of allometry exhibited by the fish species, slopes of length-weight regressions were compared to 3 using a student t- test.

3. RESULTS

As shown in Table 1, *Tilapia guineensis* from Ojo creek had a total length that ranged from 9-12.9cm (mean=10.57 \pm 1.17), the range of its body weight was 20-40g (mean = 29.44 \pm 8.56), standard length ranged between 6.8-11.8cm (mean= 8.79 \pm 1.52), while the range of its head depth was 1.3-2.2cm (mean =1.88 \pm 0.25). On the other hand, *T. guineensis* from Badagry creek, had a total length range of 7.6-12cm (mean=10.26 \pm 1.21), standard length ranged between 6-10.9cm (mean= 8.53 \pm 1.29), the range of its body weight was 20-40g (mean = 29.17 \pm 5.75), while the range of its head depth was 1.1-2.3cm (mean =1.79 \pm 0.28). However, there were no significant differences ($p>0.05$) between the mean total length, body weight, standard length, and head depth of *T. guineensis* recorded from both creeks.

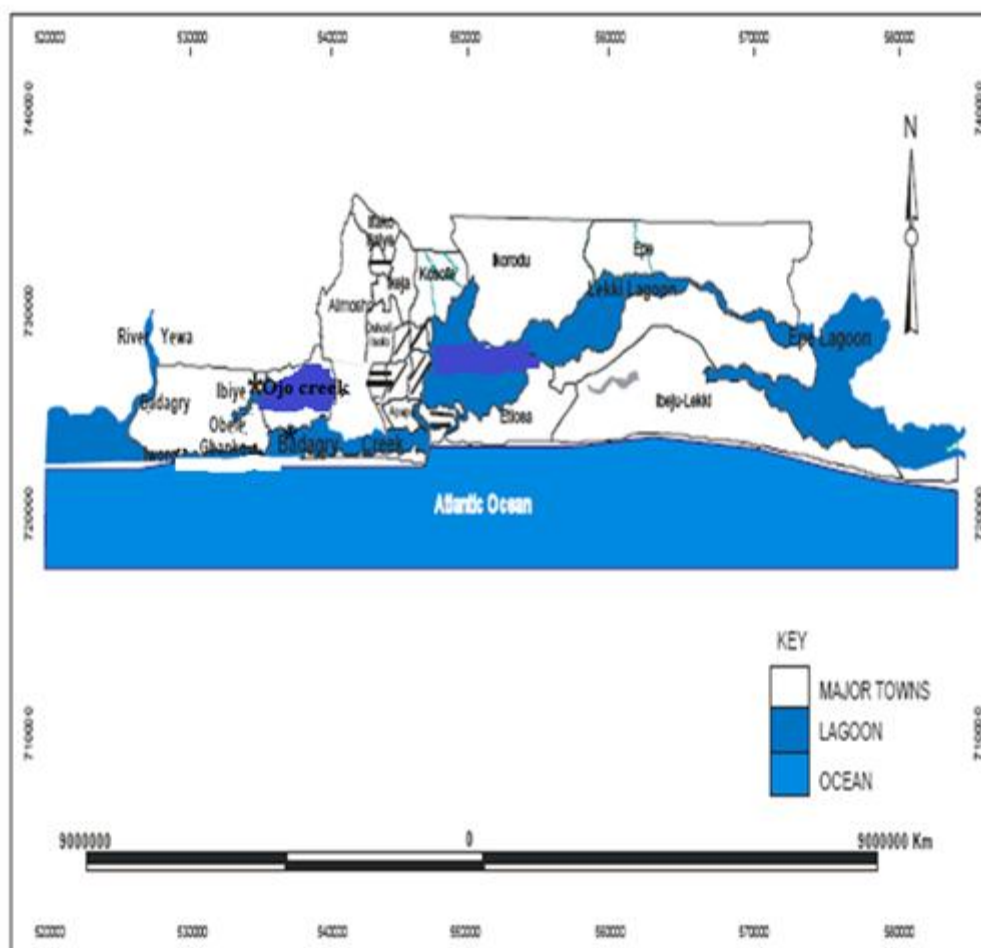


Image 1. Map showing the location of Badagry and Ojo Creeks in Lagos, Nigeria

While *T. guineensis* from Ojo creek had a condition factor (*K*) value of 2.28 ± 0.54 (range: 1.86-2.74), the *K* value of *T. guineensis* from Badagry creek was 3.59 ± 0.44 (range: 2.31-4.55). The *K* values for the fish from Badagry creek differ significantly ($p < 0.05$) from Ojo creeks

Table 1. Summary of Some Morphometric characters and condition factor of *Tilapia guineensis* from Badagry and Ojo creeks in Lagos, Nigeria

Parameter	Ojo Creek				Badagry Creek			
	Min.	Max.	Mean	SD	Min	Max	Mean	SD
TL(cm)	9	12.9	10.57 ^a	1.17	7.6	12	10.26 ^a	1.21
BW(g)	20	40	29.44 ^a	8.56	20	40	29.17 ^a	5.75
HD(cm)	1.3	2.2	1.88 ^a	0.25	1.1	2.3	1.79 ^a	0.28
SL(cm)	6.8	11.8	8.79 ^a	1.27	6	10.9	8.53 ^a	1.29
K	1.86	2.74	2.28 ^b	0.54	2.31	4.55	3.59 ^a	0.44

TL = Total Length, BW=Body Weight, HD=Head depth, SL=standard length, K=Condition factor, Min= Minimum, Max= Maximum, SD=Standard Deviation. Mean value with different superscript in the row= significant different ($p < 0.05$)

Length-weight relationships of *T. guineensis* obtained from Ojo creek, and Badagry creek is presented in Figs. 1-2, respectively. The value of *b* (slope) of the linear regression equation showed that the growth pattern of *T. guineensis*

were negative allometry ($b < 3$). At Ojo creek, the fish had a higher *b* value (2.002), as shown in Fig. 1, while the fish from Badagry creek had *b* value of 0.371 (Fig. 2). The value of their various intercepts (*a*) ranged from - 1.366 at Ojo creek to

2.490 in Badagry creek. The higher regression correlation values (R^2) was recorded in *T. guineensis* from Ojo creek ($R^2=0.551$) as against that from Badagry creek ($R^2=0.052$).

The histopathological results for *Tilapia guineensis* from Badagry and Ojo Creeks are presented in Figs. 3a-5b. Figs. 3a and 3b showed the structures of the gills of *T. guineensis* from Badagry creek and Ojo creek, respectively. The gill of the fish from Badagry creek (Fig.3a) showed vasodilation (V) with blood congestion (C) and mild hypertrophy (H) of lamellae. However, most of the secondary

lamellae (SL) are free (clear water channel (W)) and intact with no evidence of epithelial lifting and curling of lamellae.

On the other hand, the gill structure of *T. guineensis* from Ojo creek (Fig.3b) showed severe degeneration (D) and hyperplasia (HL) of secondary gill lamellae (D), separation of gill fill mate from the basement membrane (S), and curling of secondary lamellae (C) with unclear water channel (W). It is also characterized by hypertrophy of lamellae (H). There is also evidence of partial fusion of lamellae (F) and dilation of gill filament (V).

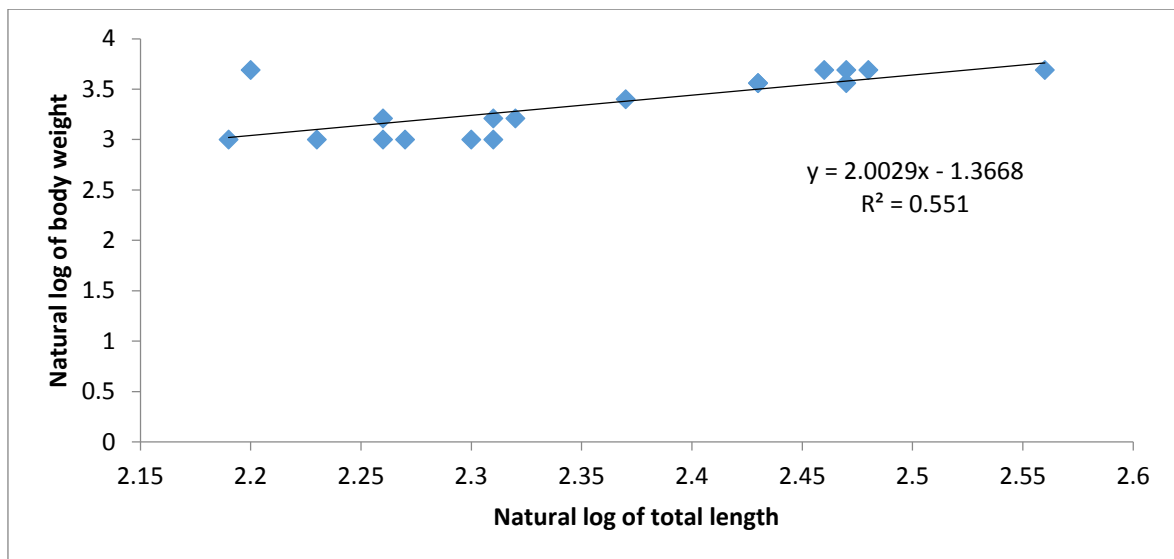


Fig. 1. Length-weight relationship of *Tilapia guineensis* from Ojo Creeks

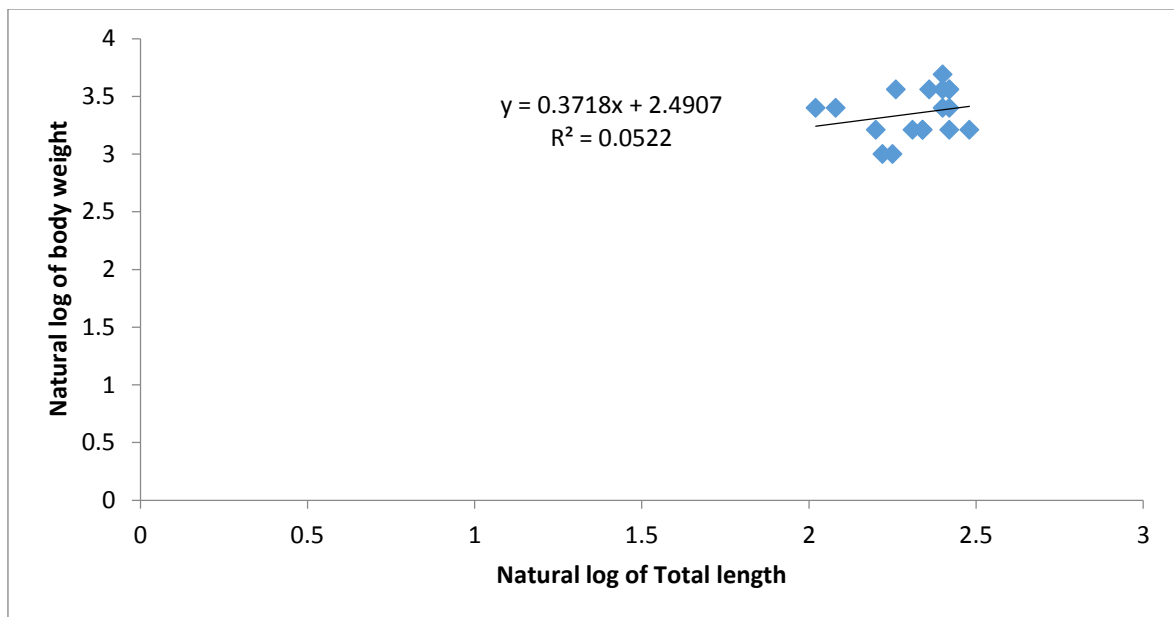


Fig. 2. Length-weight relationship of *Tilapia guineensis* from Badagry Creeks

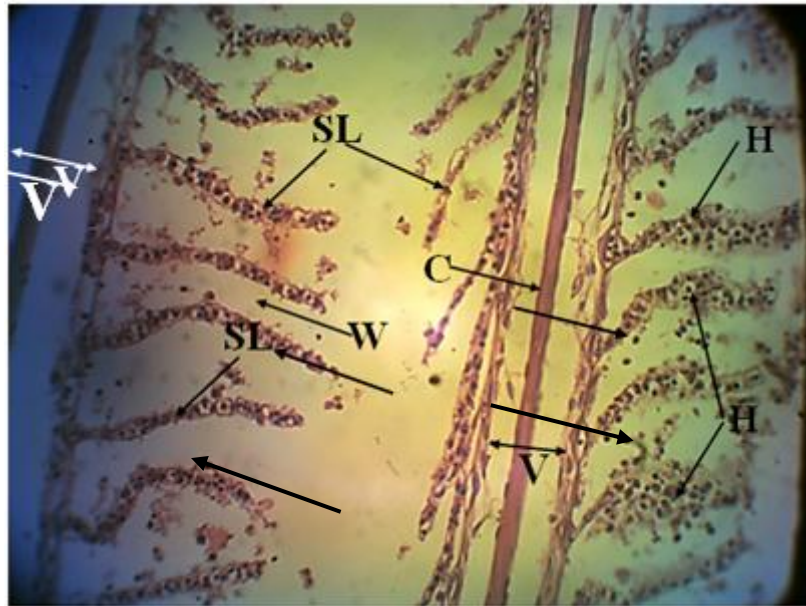


Fig. 3a. Showing the gill's structure of *Tilapia guineensis* from Badagry creek

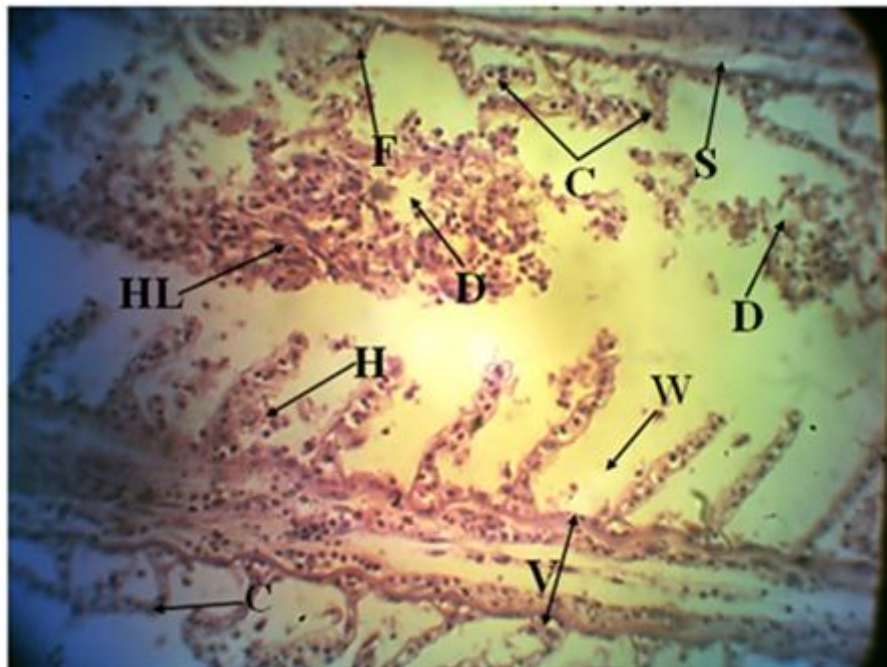


Fig. 3b. Showing the gill's structure of *Tilapia guineensis* from Ojo creek

Figs. 4a and 4b presented the histopathological results on the small intestine of *T. guineensis* from Badagry creek (Fig.4a) and Ojo creek (Fig.4b). For *T. guineensis* from Badagry creek, the cross section of the small intestine showed the intestinal fold (I), Outer muscularis (Om) and inner muscularis layer (Im). There is slight degeneration and vacuolization in Submucosa connective layer (D). However, glandular cell

(Gc) are adequately seen. It also showed a mild lesion in epithelial lining Serosa(S). As shown in Fig. 4b, small intestine of *T. guineensis* from Ojo creek is characterized by few glandular cell(G), vacuolization of connective tissues in the submucosal layer (Vs). However, the intestinal layers were seen. Serosa (S), muscularis (M), submucosal (Sm), and intestinal lining epithelium (le) were also very clear.

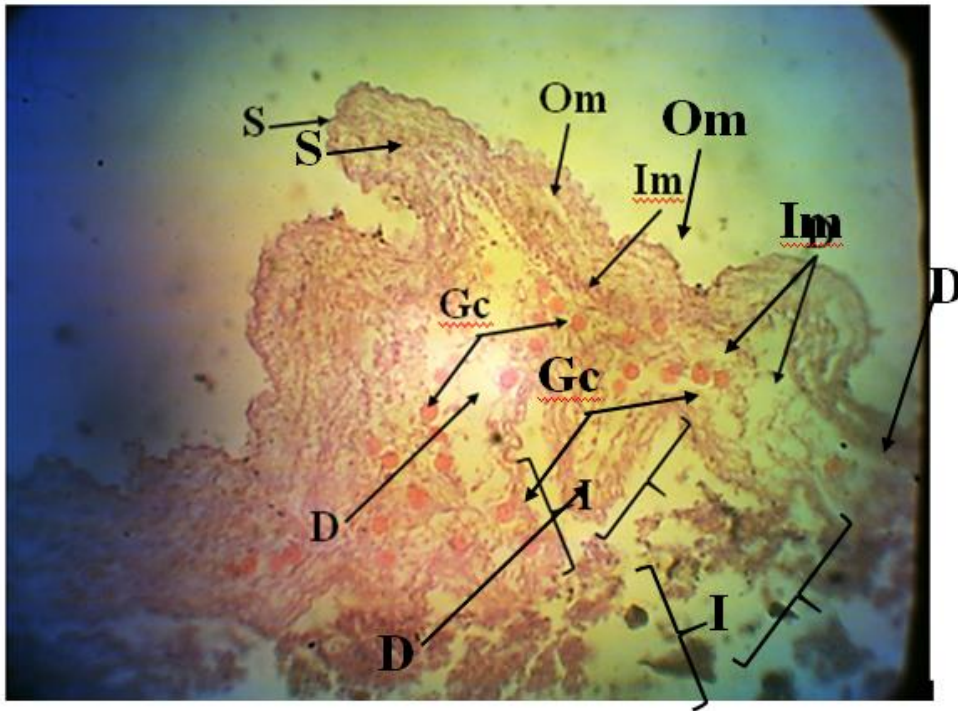


Fig. 4a. The cross section of the small intestine of *Tilapia guineensis* from Badagry creek

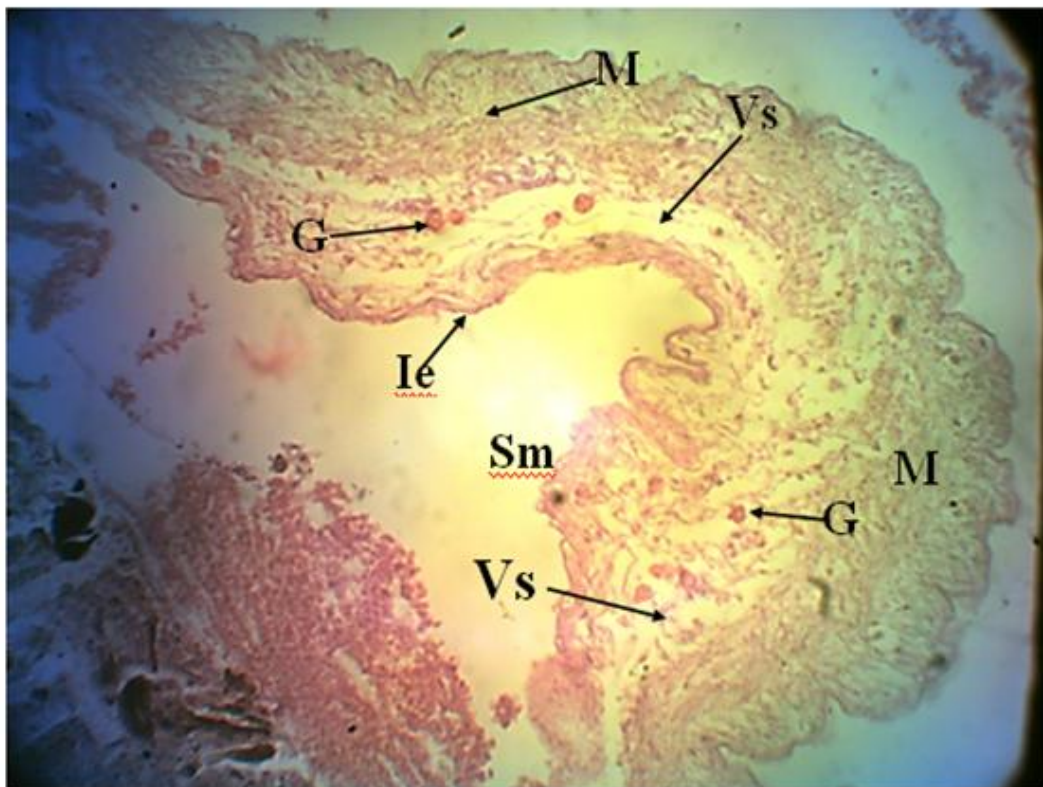


Fig. 4b. The cross section of the small intestine of *Tilapia guineensis* from Ojo creek

The cross-section of muscle of *T.guineensis* from Badagry creek and Ojo creek are presented in Figs. 5a and 5b, respectively. Muscle of *T.guineensis* from Badagry creek showed intact section of muscle bundles (M) divided with septa spaces (S) and there was no visible degeneration and lesion. On the other hand, cross-section of the muscle of *T.guineensis* from Ojo creek showed severe lesion (L) of muscle bundle with widened intramuscular spaces (Sw). There is also degeneration of muscular bundle (d) and shortening of bundles (s).

4. DISCUSSION

There was no significant difference between the mean total length, body weight, standard length, and head depth of *Tilapia guineensis* recorded from both Badagry and Ojo creeks in this study. This indifference in the morphometric characters

of *T. guineensis* from both creeks could imply no variation in growth rate, survival and metabolism in the fish, as opined by [29]. A report have shown that environmental disturbances could induce changes in the same organism[12], while [30] divulged that morphometric variation between fish stocks could be applicable for studying short-term, environmentally induced variation geared towards successful fisheries management.

However, the total length and body weight of *T. guineensis* from Ojo and Badagry creeks are comparatively lower than that recorded in *Oreochromis niloticus* and *Lates niloticus* from Doma Dam, north-central, Nigeria [9]. Similarly, the values of morphometric character recorded for *T. guineensis* in this study was lower than that reported for *Oreochromis niloticus* in Thailand [31].

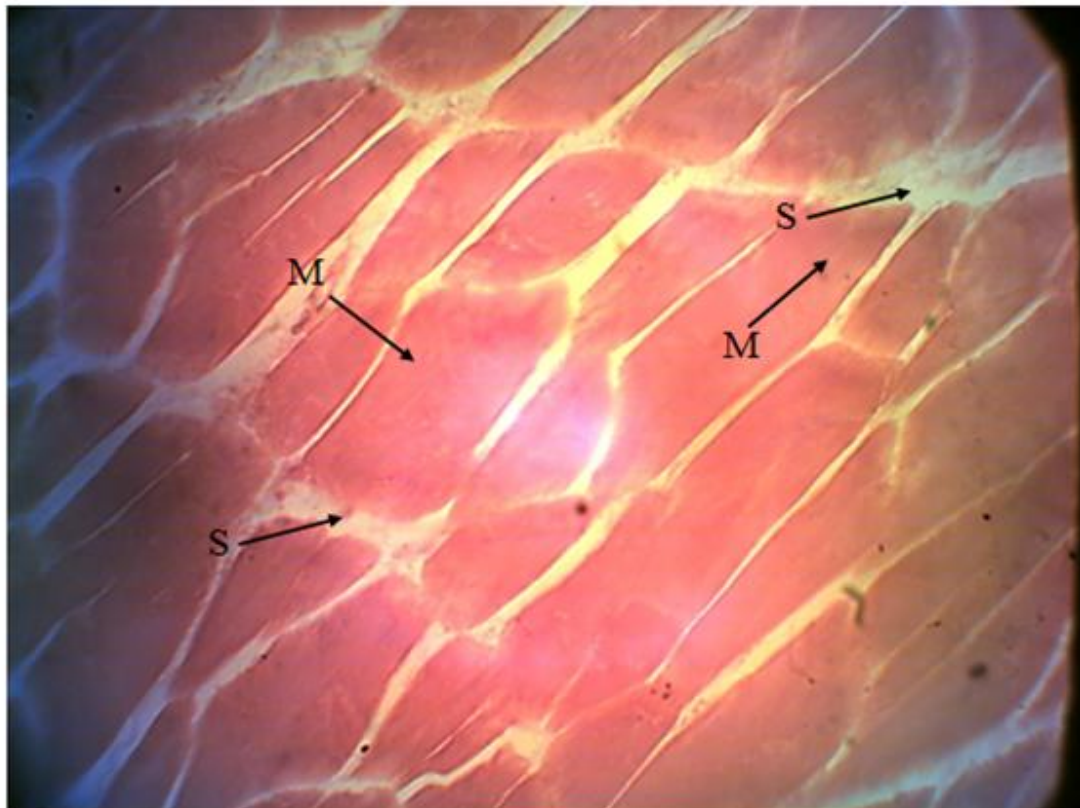


Fig. 5a. The cross section of muscle of *Tilapia guineensis* from Badagry creek

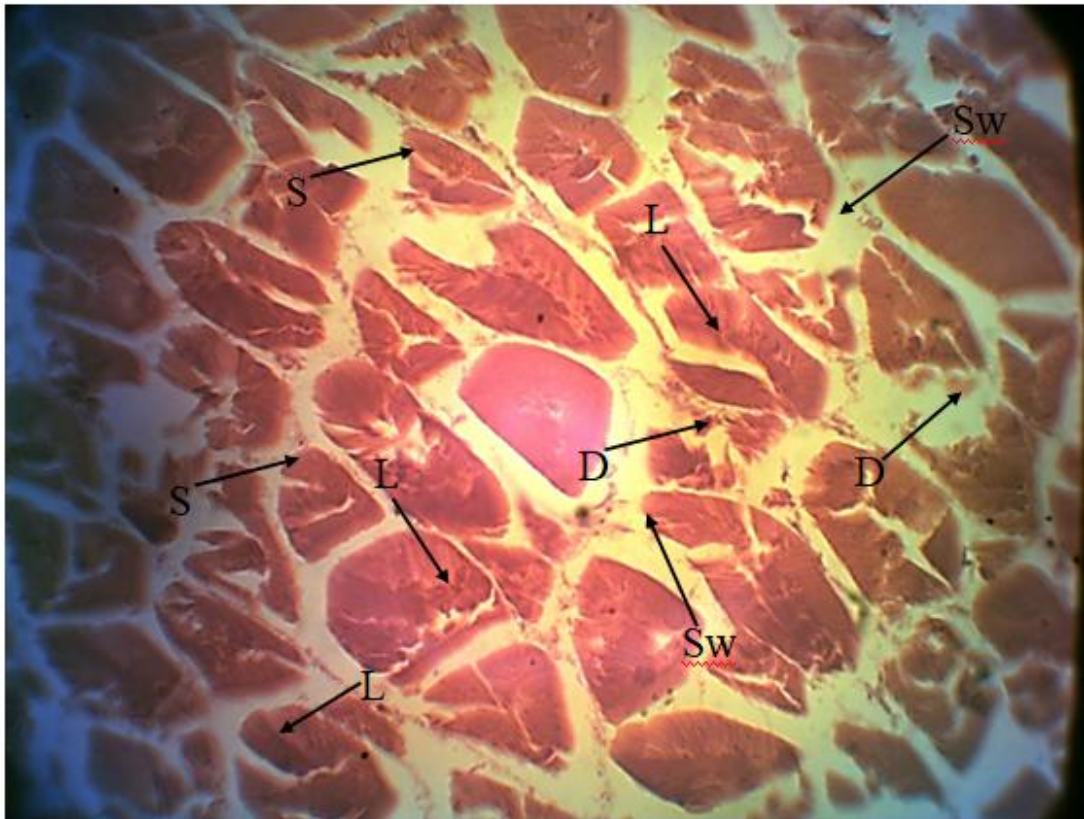


Fig. 5b. The cross section of muscle of *Tilapia guineensis* from Ojo creek

Both *T. guineensis* from Ojo and Badagry creeks had condition factor (k) value greater than 1 indicating that the fishes are in good condition. A similar trend of k factor has been reported by in *Barbus occidentalis* and *Tilapia marie*[32]. Moreso, k factor greater than 1 was recorded for *Parachanna obscura* from River Oshun [33]. Condition factor is a useful index for monitoring feeding intensity, age, and growth rates in fish [15]. However k factor is strongly influenced by both biotic and abiotic environmental conditions. It thus can be used as an index to assess the status of the aquatic ecosystem in which fish live [16,34].

Length-weight relationships of *T. guineensis* obtained from Ojo creek and Badagry creek showed that *T. guineensis* had negative allometry ($b < 3$) growth pattern. This implies that the fish becomes thinner with increase in length. The value of regression correlation (R^2) recorded in *T. guineensis* from Ojo creek ($R^2 = 0.551$) indicated a strong positive relationship between the length and weight of the fish, while regression correlation (R^2) for *T. guineensis* from Badagry creek ($R^2 = 0.052$) indicated a weak positive relationship. Similar negative allometry

growth patterns in different fish species have been documented. For instance, [35] reported a negative allometry growth pattern for *Tillapia zilli*, *Sarotherodon galilaeus*, *Sardinella maderensis*, *Pellonula leonesis* from Badagry creek. Similarly [36] reported negative allometric growth for both males and females juvenile of *Sphyraena afra* in the coastal waters of Lagos State, while [37] reported negative allometric growth for *S. afra* in two water bodies from Lagos State. However, in contrast to results obtained in this study, an isometric growth was reported for sub adult *Lutjanus goreensis* caught from Grandlahou Lagoon in Coted' Ivoire[38]. Also, isometric growth pattern was recorded for *P. typus* caught from Senegal coast [39]. On the other hand [40] reported positive allometry for juvenile *Sphyraena obtusata* in Bombay waters of the west coast of India, while positive allometry was reported for the *Parachanna obscura* population in Anambra River [41]. Length-weight relationships provide useful information for fishery management and both basic and applied purposes [42,43].

As observed in this study, there was no significant variation between the small intestine

structure of *T. guineensis* from Badagry creek and Ojo creek as the glandular cell, serosa, muscularis, submucosal, intestinal lining epithelium of *T. guineensis* from both creeks were very clear; although mild lesion was observed in the small intestine of *T. guineensis* from Badagry creek. However, the examined muscles of *T. guineensis* from Badagry creek and Ojo creek are different. While there was no visible degeneration and lesion in the muscle of *T. guineensis* from Badagry creek; muscle of *T. guineensis* from Ojo creek showed a severe lesion of muscle bundle, degeneration of muscular bundle and shortening of bundles. This observation could suggest that Ojo creek is more polluted with different contaminants than Badagry creek. In contrast to the present observation, no observed difference were recorded in the muscle of *Callinectes pallidus* collected from two coastal waters in Lagos state [19].

In this study, the gills structure of *T. guineensis* from Badagry creek is better than the gills structure of *T. guineensis* from Ojo creek. The reason is that the gills structure of *T. guineensis* from Ojo creek showed severe degeneration, hyperplasia of secondary gill lamellae, and curling of secondary lamellae with unclear water channel. It is also characterized by hypertrophy of lamellae, and there is evidence of partial fusion of lamellae and dilation of gill filament. On the contrary, the gills structure of *T. guineensis* from Badagry creek showed no evidence of epithelial lifting and curling of lamellae and the secondary lamellae are intact with a clear water channel. This different observation could suggest that Ojo creek is more subjected to effluents than Badagry creek.

The observation in this study is similar to the report that divulged that the most prevalent lesions on gills of *Clarias gariepinus* and *Oreochromis niloticus* were a distortion of lamellae, clubbing and fusion of the secondary lamellae due to hypertrophy and hyperplasia of the respiratory epithelium and cells at the base of the secondary lamellae [44].

As opined by [45,46], pollutants not only enter the organism through the gills, but also exert their primary toxic effects on the branchial epithelium, which in turn, may influence the general gill functions. A very high percentage of gill lesions, especially hyperplasia observed in *Tautoglabrus adspersus* when exposed to municipal and industrial effluents also buttressed

the present findings [47]. Moreso, [19] had reported that environmental stressors such as brewery effluents- that contain high carbohydrate, nitrogen and washing reagents; high concentration of heavy metals (such as Cu, Zn and Fe) and pharmaceutical effluents cause structural degeneration and lesion in the hepatopancreas and ovaries of *Callinectes pallidus*.

5. CONCLUSION

The study has indicated the *T. guineensis* from Badagry creek and Ojo creek had negative allometric growth ($b < 3$), and there was no significant difference in their total length, body weight and head depth, Although *T. guineensis* from both creeks had condition factor (k) greater than 1 which signifies being in good condition, the histopathological examination revealed that *T. guineensis* from Ojo creek are more threatened by environmental stressors than *T. guineensis* from Badagry. Therefore, collective effort towards ensuring reduction in direct discharge of untreated effluent into the creek is pertinent.

COMPETING INTERESTS

Authors have declared that no competing interests exist.

REFERENCES

1. Trewavas E. Tilapiini fishes of the genera *Sarotherodon*, *Oreochromis* and *Danakalia*. British Museum(Nat. Hist.). 1983;583.
2. Zengeya TA, Booth AJ, Bastos ADS, Chimimba CT. Trophic interrelationships between the exotic Nile Tilapia, *Oreochromis niloticus* and indigenous tilapiine cichlids in a subtropical African river system (Limpopo River, South Africa). *Environmental Biology of Fishes*. 2012;92(3):479–489.
3. Nyirenda M. Abundance, Growth and Reproductive biology of Nile Tilapia, *Oreochromis niloticus* (Linnaeus, 1758) on Lake Kariba in comparison with tilapiines indigenous to the Middle Zambezi. M.Sc. Dissertation, Department of Biological Sciences, University of Zambia Press, Lusaka; 2017.
4. Ojutiku RO, Kolo RJ, Mhammed ML. Comparative study of sundrying and sewage plant effluent on brown trout

- (*Salmo trutta fario*). Aquatic Science. 2009; 61:93-110.
5. Meyer A. Phenotypic plasticity and heterochrony in *Cichlasoma managuense* (Pisces, cichlidae) and their implication for speciation in cichlid fishes. *Evolution*. 1987;41:1357-1369.
 6. Huseyn K, Hossein Z, Negin S, Abdolali M. Morphological Variability of *Liza lunzingeri* (Day, 1888) from Bandar Abbas Port and Qeshm Island in Northeastern Persian Gulf. *Journal of Fisheries and Aquatic Science*. 2005; 10:191-198.
 7. Muduli BP, Panda CR. Physico chemical properties of water collected from Dhamra Estuary. *International Journal of Environmental Science*. 2010;1(3): 334-342.
 8. Herrera-Silveira JA, Morales-Ojeda SM. Evaluation of the health status of a coastal ecosystem in southeast Mexico: assessment of water quality, phytoplankton and submerged aquatic vegetation. *Marine Pollution Bulletin*. 2009;59:72-86.
 9. Yakubu A, Okunsebor SA. Morphometric differentiation of two Nigerian fish species (*Oreochromis niloticus* and *Lates niloticus*) Using Principal Components and Discriminant Analysis. *International Journal of Morphology*. 2011;29(4): 1429-1434.
 10. Samaradivakara SP, Sala OE, Chapin FS, Armesto JJ, Berlow E, Bloomfield J, Dirzo R, Huber-Sanwald E, Hirimuthugoda NY, Gunawardana RHANM, Lileperuma RJ, Fernandopulle ND, De Silva AD, Alexander PABD. Morphological Variation of Four *Tilapia* Populations in Selected Reservoirs in Sri Lanka. *Tropical Agricultural Research*. 2012;23(2):105-116.
 11. Bradbeer JS, Jack H, Watson HW, Shechonge A, Smith A, Tamatamah R, Ngatunga BP, Turner FG, Genner MJ. Limited hybridization between introduced and critically endangered indigenous *Tilapia* fishes in Northern Tanzania; 2018. Available: <http://doi.org/10.1007/s10750-018-3572-5>.
 12. Davis JLD, Eckert MG, Young-Williams AC, Hines AH, Zohar Y. Morphological conditioning of a hatchery raised invertebrate *Callinectes sapidus* to improve field survivorship after release. *Aquaculture*. 2005;243(1-4):147-158.
 13. Møller AP. Developmental instability as a general measure of stress. *Advances in the Study of Behaviour*. 1998;27:181-213.
 14. Thomas J, Venus S, Kurup BM. Length-weight relationship of some deep-sea fish inhabiting continental slope beyond 250m depth along West coast of India. *Naga, World Fish Cent Quart*. 2003;26:17-21.
 15. Oni SK, Olayemi JY, Adegboye JD. Comparative physiology of three ecologically distinct fresh water fishes, *Alestes nurse* (Ruppell), *Synodontis schall* (Bloch), *S. schneider* and *Tilapia zilli* (Gervais). *Journal of Fish Biology*. 1983;22:105-109.
 16. Anene A. Condition factors of four cichlid species of a man-made lake in Imo state, Southeast, Nigeria. *Turkish Journal of Fisheries and Aquatic Sciences*. 2005;5:43-47.
 17. Poleksic, V, Mitrovic-Tutundzic V. Fish Gills as a Monitor of Sublethal and Chronic Effects of Pollution. In: *Sublethal and chronic effects of pollutants on freshwater fish*. (R Muller, R Llyod, editors). Cambridge University Press, Cambridge. 1994;339-352.
 18. Mazon AF, Cerqueira CCC, Monteiro EAS, Fernandes MN. Acute copper exposure in freshwater fish: Morphological and physiological effect. In: *Biology of tropical fishes*. (AL Val, VMF Almeida-Val, editors). INPA, Manaus. 1999;263-275.
 19. Mekuleyi GO, Fakoya KA. Comparative Histopathology of Gladiator Swimming Crab (*Callinectes pallidus*) from two Coastal Areas in Lagos, Southwest, Nigeria. *Journal of Applied Sciences and Environmental Management*. 2017; 21(3): 587-591.
 20. Escher M, Wahli T, Büttner S, Meier W, Burkhardt-Holm P. The effects of tent drying of *Hyperopsis babeo occidentalis*. *Pakistan Journal of Nutrition*. 1999;7: 955-957.
 21. Bernet D, Schmidt H, Wahli T, Burkhardt-Holm, P. Effluent from a sewage treatment works causes changes in serum chemistry of brown trout (*Salmo trutta*). *Ecotoxicology and Environmental Safety*. 2001;48:140-147.
 22. Midhila MN, Chitra KC. Nonylphenol-induced hepatotoxicity in the freshwater fish, *Oreochromis mossambicus*. *International Journal of Scientific Research Publications*. 2015;5(3):1-5.
 23. Patel B, Upadhyay A, Parikh A. Histological changes in the tissues of *Oreochromis mossambicus* and *Labeo rohita* on exposure to imidacloprid and

- curzate. International Journal of Research in Applied, Natural and Social Sciences. 2001;4(5):149-160.
24. Anyanwu AJ, Ezenwa BIO. Incidence of parasitic infection of pond raised Tilapia spp. and some cultivable fish species from three ecological areas of Lagos state. Nigeria Institute of Oceanography and Marine Research, Technical. 1988;32.
 25. Bagenal TB. Aspects of fish fecundity. In: Gerking, S. D. (Ed.). Ecology of freshwater fish production. Oxford: Blackwell Scientific Publications. 1978;75-101.
 26. Pauly D. Some simple methods for the assessment of tropical fish stocks. FAO Fisheries Tech. Pap., FAO. Rome. 1983;234:52.
 27. Ecoutin JM, Albaret JJ. Relation longueur-poids pour 52 espèces de poissons des estuaires et lagunes de l'Afrique de l'Ouest. Cybium. 2003;27(1):3-9.
 28. Cek S, Niall B, Clive R, Krishen R. Oogenesis, Hepatosomatic and gonadosomatic indexes, and sex ratio in Rosy Barb (*Puntius conchonius*). Turkish Journal of Fisheries and Aquatic Science. 2001;1(1):33-41.
 29. Diaz LS, Roa A, Gareia CB, Acero A, Nava G. Length-weight relationships of demersal fishes from the upper continental slope off Columbia. The ICLARM Quarterly. 2000; 23(3):23-25.
 30. Torres RG, Gonzalez PS, Pena SE. Anatomical, histological and ultrastructural description of the gills and liver of the Tilapia (*Oreochromis niloticus*). International Journal of Morphology. 2010;28(3):703-12.
 31. Piya K, Piyadon S, Kanitta J, Wannee J. Morphometric Characters of Nile Tilapia (*Oreochromis niloticus*) in Thailand. Walailak Journal of Science and Technology. 2014;11(10):857-863.
 32. Dan-Kishiya AS. Length-weight relationship and condition factor of five fish species from a tropical water supply reservoir in Abuja, Nigeria. American Journal of Research Communication. 2013;1:175-187.
 33. Olurin KB, Savage OD. Reproductive biology, length-weight relationship and condition factor of the African snake head, *Parachanna obscura*, from River Oshun, South-west Nigeria. International Journal of Fisheries and Aquaculture. 2011;3(8): 146-150.
 34. Tah L, GooréBi G, DaCosta KS. Length weight relationships for 36 freshwater fish species from two tropical reservoirs: Ayamé I and Buyo, Côte d'Ivoire. International Journal of Tropical Biology. 2012;60(4):1847-1856.
 35. Aderinola OJ, Adeboyejo OA, Mekuleyi GO. Length-Weight Relationship and Condition Factors of Some Fish and Crab Species from Badagry Creek, Lagos, Nigeria. African Journal of Agriculture and Food Science. 2020;3(3):38-46.
 36. Kumolu-Johnson CA, Ndimele PE. Length-weight relationships and condition factors of twenty-one fish species in Ologe Lagoon, Lagos, Nigeria. Asian Journal of Agricultural Science. 2010;2:174-179.
 37. Caroline IA, Adedolapo AA. Length-weight relationship and condition factor of *Sphyraena afra* from the coastal waters of Lagos State, Fisheries and Aquatic Life. 2019;27:27-31.
 38. Coulibaly B, Bamba M, Tah L, Kouamélan EP, Koné T. Length-weight relationships of 18 fish species in grand-lahou lagoon, south-west Côte d'Ivoire. International Journal of Fisheries and Aquatic Studies. 2018;6(6):372-376.
 39. Waly N, Alassane S, Malick D, Alioune F, Abiboulaye M. Length-weight relationships of some fish species from the Bandiala River in Saloum Delta, Senegal. International Journal of Advanced Research. 2015;3(4):132-138.
 40. Jaiswar AK, Parida PK, Chakraborty SK, Palaniswamy R. Morphometry and length-weight relationship of obtuse barracuda *Sphyraena obtusata* (Cuvier) (Teleostomi/Actinopterygii/Sphyraenidae) from Bombay waters, west coast of India. Indian Journal of Marine Sciences. 2015;33(3):307-309.
 41. Odo GE, Onoja SU, Onyishi GC. The biology of *Parachanna obscura* (Osteichthyes: Channidae) in Anambra River, Nigeria. International Journal of Fisheries and Aquaculture. 2012;4:154-169.
 42. Dar SA, Najar AM, Balkhi MH, Rather MA, Sharma R. Length weight relationship and relative condition factor of *Schizopy geosocinus* (Heckel, 1838) from Jhelum water, Kashmir. International Journal of Aquatic Science. 2012;3(1): 29-36.
 43. Ndiaye W, Diouf K, Samba O, Ndiaye P, Panfili J. The length-weight relationship and condition factor of white grouper

- (*Epinephelus aeneus*, Geoffroy Saint Hilaire, 1817) at the South-West Coast of Senegal, West Africa. *International Journal of Advanced Research*. 2015;3(3):145-153.
44. Abiona OO, Anifowose AJ, Awojide SH, Adebisi OC, Adesina BT, Ipinmoroti MO. Histopathological biomarking changes in the internal organs of Tilapia (*Oreochromis niloticus*) and catfish (*Clarias gariepinus*) exposed to heavy metals contamination from Dandaru pond, Ibadan, Nigeria. *Journal of Taibah University for Science*. 2019;13(1):903-911.
45. Garcia-Santos S, Fontainhas-Fernandes A, Wilson JM. Cadmium tolerance in the Nile tilapia (*Oreochromis niloticus*) following acute exposure: Assessment of some ionoregulatory parameters. *Environmental Toxicology*. 2006;21(6):33-46.
46. Playle RC, Gensemer RW, Dixon DG. Copper accumulation on gills of fathead minnows: influence of water hardness, complexation and pH of the gill micro-environment. *Environmental Toxicology and Chemistry*. 1992;11:381-391.
47. Billiard SM, Khan RA. Chronic stress in cunner, *Tautoglabrus adspersus*, exposed to municipal and industrial effluents. *Ecotoxicology and Environmental Safety*. 2003;55:9-18.

© 2022 Joseph et al.; This is an Open Access article distributed under the terms of the Creative Commons Attribution License (<http://creativecommons.org/licenses/by/4.0>), which permits unrestricted use, distribution, and reproduction in any medium, provided the original work is properly cited.

Peer-review history:

The peer review history for this paper can be accessed here:
<https://www.sdiarticle5.com/review-history/82832>